

LEA Name : Morrisville Borough SD
Address : 550 W Palmer St
Morrisville , PA 19067

County : Bucks
AUN Number : 122097203
LEA Type : SD

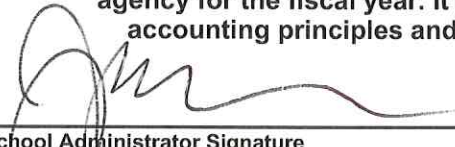
Annual Financial Report Accuracy Certification Statement

For Fiscal Year Ending
6/30/2020

Pennsylvania Department of Education
&
Office of Comptroller Operations

PDE-2056: Intermediate Unit
PDE-2057: School District, AVTS/CTC, Charter School,
and Special Program Jointure

CERTIFICATION: By signing this page I agree that the electronic data submitted is a complete and accurate statement of the financial operations and status of the local education agency for the fiscal year. It has been prepared in accordance with generally accepted accounting principles and established Commonwealth of PA reporting guidelines.



Chief School Administrator Signature



Date



Board Secretary Signature



Date

Robert Bruchak

Contact Person

rbruchak@mv.org

Contact Person E-mail Address

(267)797-0099

Ext :

Contact Person Telephone Number

(215)736-5370

Contact Person Fax Number

Audit Certification
Annual Financial Report:
For Fiscal Year Ending **6/30/2020**
(Pursuant to PA School Code Section 218(b))

LEA Name : Morrisville Borough SD
AUN Number : 122097203
County : Bucks

Audit Certification Due: 12/31/2020

This certification is applicable to the Annual Financial Report data submitted through the Consolidated Financial Reporting System (CFRS).

CERTIFICATION: By signing this page I agree that the financial statements of the school have been properly audited as noted above pursuant to Article XXIV, and in the auditor's professional opinion, the Annual Financial Report (PDE-2057) submitted through CFRS is materially consistent with the audited financial statements.

Chief School Administrator

Signature

Date

Board Secretary

Signature

Date

Robert Bruchak

Contact Person

rbruchak@mv.org

Contact Person E-mail Address

(267)797-0099

Ext :

Contact Person Telephone Number

(215)736-5370

Contact Person Fax Number

MORRISVILLE BOROUGH SCHOOL DISTRICT

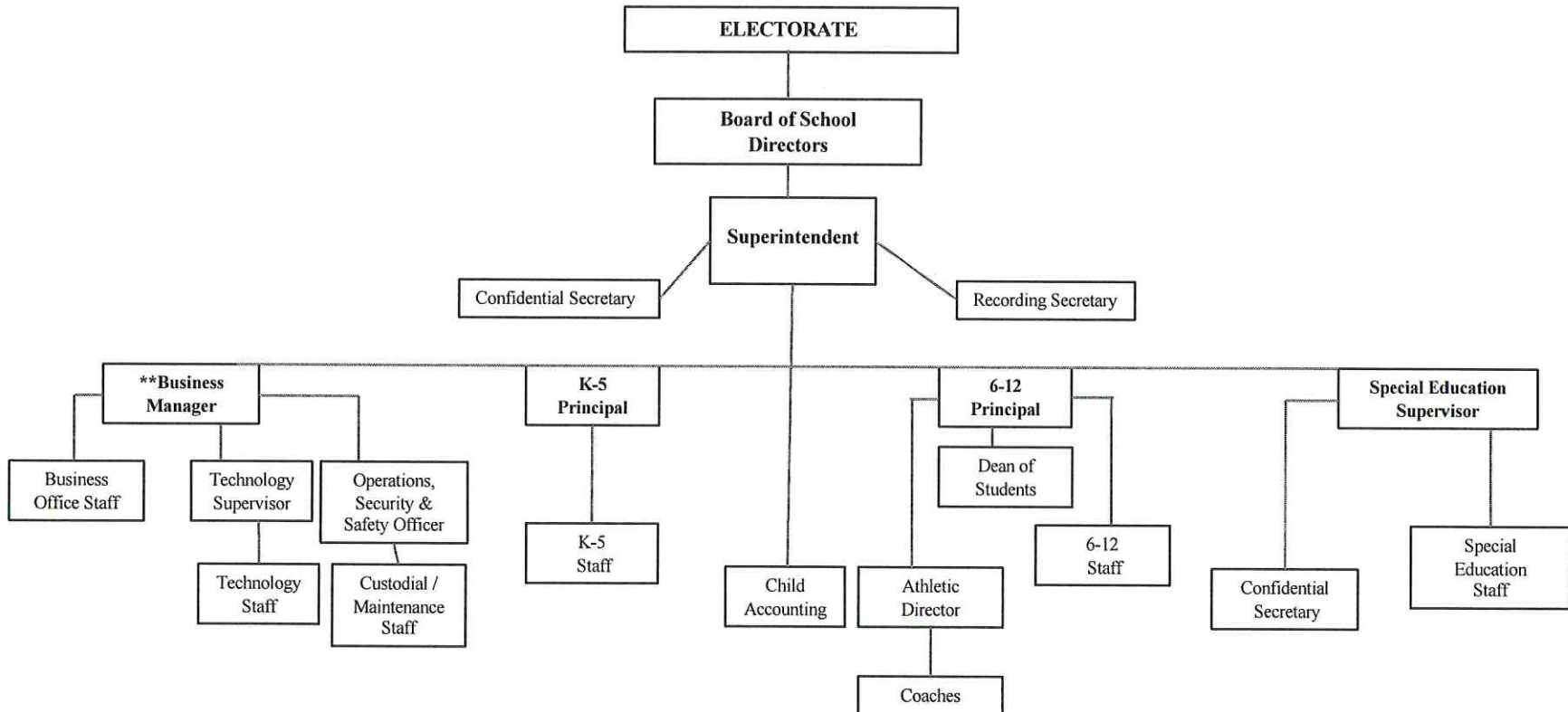
No. 008

SECTION: LOCAL BOARD PROCEDURES

TITLE: ORGANIZATION CHART

ADOPTED: MAY 24, 2017

REVISED: OCTOBER 10, 2018



SCHOOL DISTRICT OF BOROUGH OF MORRISVILLE

Capitalization Policy

Capital assets, which include property, plant and equipment, are reported in the applicable governmental or business-type activities columns in the government-wide financial statements and the proprietary fund financial statements. Capital assets are defined by the District as assets with an initial individual cost of more than \$1,000 and composite assets of more than \$5,000. Such assets are recorded at historical cost if purchased or constructed. Donated capital assets are recorded at estimated fair value at the date of donation.

The costs of normal maintenance and repairs that do not add to the value of the asset or materially extend assets' lives are not capitalized.

Major outlays for capital assets and improvements are capitalized as projects are constructed, inclusive of ancillary costs.

Property, plant and equipment (net of salvage value) of the District is depreciated using the straight-line method over the following estimated useful lives: buildings and improvements – 10-50 years; land improvements – 15-20 years and furniture and equipment – 5-20 years.

<u>Val Number</u>	<u>Description</u>	<u>Justification</u>
42420	Expenditure Detail: Total current year 2700-513 expenditure varies from prior year by 10%. Correct the data or enter a justification. 2700-513, AFR Exp Detail: \$85,520.00 2700-513, PY AFR Amount: \$58,526.00	INCREASE IN TRANSPORTATION COSTS IN THE CURRENT YEAR.

LEA : 122097203 Morrisville Borough SD

Printed 1/27/2021 9:59:18 AM

Amounts Expressed in Whole Dollars		<u>General Fund</u> <u>(10)</u>	<u>Student Sponsored</u> <u>Activity Fund</u> <u>(21)</u>	<u>Public Purpose Trust</u> <u>(27)</u>	<u>Other Compt Approved</u> <u>(28)</u>	<u>Athletic / Activity</u> <u>(29)</u>
Assets And Deferred Outflows Of Resources						
Assets						
0100	Cash and Cash Equivalents	1,059,710				
0110	Investments					
0120	Taxes Receivable	528,557				
0130	Due From Other Funds					
0141	Due From Other Governments	964,390				
0142	State Revenue Receivable					
0143	Federal Revenue Receivable					
0145	Other Intergovernmental Revenue Receivable					
0146	Due from Primary Government					
0147	Due from Component Unit					
0150	Other Receivables	13,752				
0170	Inventories					
0180	Prepaid Expenses (Expenditures)					
0190	Other Current Assets					
Total Assets		\$2,566,409				
0910	Deferred Outflows of Resources					
Total Assets And Deferred Outflows Of Resources		\$2,566,409				

LEA : 122097203 Morrisville Borough SD

Printed 1/27/2021 9:59:18 AM

Amounts Expressed in Whole Dollars		<u>Capital Reserve (690.</u> <u>1850)</u> <u>(31)</u>	<u>Capital Reserve (1431)</u> <u>(32)</u>	<u>Other Capital Projects</u> <u>Fund</u> <u>(39)</u>	<u>Debt Service</u> <u>(40)</u>	<u>Permanent</u> <u>(90)</u>
Assets And Deferred Outflows Of Resources						
Assets						
0100	Cash and Cash Equivalents		1,090	28		
0110	Investments					
0120	Taxes Receivable					
0130	Due From Other Funds					
0141	Due From Other Governments					
0142	State Revenue Receivable					
0143	Federal Revenue Receivable					
0145	Other Intergovernmental Revenue Receivable					
0146	Due from Primary Government					
0147	Due from Component Unit					
0150	Other Receivables					
0170	Inventories					
0180	Prepaid Expenses (Expenditures)					
0190	Other Current Assets					
Total Assets			\$1,090	\$28		
0910	Deferred Outflows of Resources					
Total Assets And Deferred Outflows Of Resources			\$1,090	\$28		

LEA : 122097203 Morrisville Borough SD

Printed 1/27/2021 9:59:18 AM

Amounts Expressed in Whole Dollars		<u>Total Governmental</u> <u>Funds</u>
Assets And Deferred Outflows Of Resources		
Assets		
0100 Cash and Cash Equivalents	1,060,828	
0110 Investments		
0120 Taxes Receivable	528,557	
0130 Due From Other Funds		
0141 Due From Other Governments	964,390	
0142 State Revenue Receivable		
0143 Federal Revenue Receivable		
0145 Other Intergovernmental Revenue Receivable		
0146 Due from Primary Government		
0147 Due from Component Unit		
0150 Other Receivables	13,752	
0170 Inventories		
0180 Prepaid Expenses (Expenditures)		
0190 Other Current Assets		
Total Assets	\$2,567,527	
0910 Deferred Outflows of Resources		
Total Assets And Deferred Outflows Of Resources	\$2,567,527	

Amounts Expressed in Whole Dollars	<u>General Fund</u> <u>(10)</u>	<u>Student Sponsored</u> <u>Activity Fund</u> <u>(21)</u>	<u>Public Purpose Trust</u> <u>(27)</u>	<u>Other Compt Approved</u> <u>(28)</u>	<u>Athletic / Activity</u> <u>(29)</u>
Liabilities And Deferred Inflows Of Resources And Fund Balances					
Liabilities					
0400 Due to Other Funds					
0411 Due to Other Governments					
0412 Due to Primary Government					
0413 Due to Component Unit					
0420 Accounts Payable	1,141,130				
0430 Contracts Payable					
0440 Current Portion of Long-Term Debt					
0450 Short-Term Payables					
0461 Accrued Salaries and Benefits	2,115,046				
0462 Payroll Deductions and Withholding					
0480 Unearned Revenues					
0490 Other Current Liabilities	14,262				
Total Liabilities	\$3,270,438				
0950 Deferred Inflows of Resources	440,518				
Fund Balances					
0810 Nonspendable Fund Balance					
0820 Restricted Fund Balance					
0830 Committed Fund Balance					
0840 Assigned Fund Balance					
0850 Unassigned Fund Balance	(1,144,547)				
Total Fund Balances	(\$1,144,547)				
Total Liabilities, Deferred Inflows Of Resources And Fund Balances	\$2,566,409				

LEA : 122097203 Morrisville Borough SD

Printed 1/27/2021 9:59:18 AM

Amounts Expressed in Whole Dollars		<u>Capital Reserve (690.</u> <u>1850)</u> <u>(31)</u>	<u>Capital Reserve (1431)</u> <u>(32)</u>	<u>Other Capital Projects</u> <u>Fund</u> <u>(39)</u>	<u>Debt Service</u> <u>(40)</u>	<u>Permanent</u> <u>(90)</u>
Liabilities And Deferred Inflows Of Resources And Fund Balances						
Liabilities						
0400	Due to Other Funds					
0411	Due to Other Governments					
0412	Due to Primary Government					
0413	Due to Component Unit					
0420	Accounts Payable					
0430	Contracts Payable					
0440	Current Portion of Long-Term Debt					
0450	Short-Term Payables					
0461	Accrued Salaries and Benefits					
0462	Payroll Deductions and Withholding					
0480	Unearned Revenues					
0490	Other Current Liabilities					
Total Liabilities						
0950	Deferred Inflows of Resources					
Fund Balances						
0810	Nonspendable Fund Balance					
0820	Restricted Fund Balance		1,090	28		
0830	Committed Fund Balance					
0840	Assigned Fund Balance					
0850	Unassigned Fund Balance					
Total Fund Balances			\$1,090	\$28		
Total Liabilities, Deferred Inflows Of Resources And Fund Balances			\$1,090	\$28		

LEA : 122097203 Morrisville Borough SD

Printed 1/27/2021 9:59:18 AM

Amounts Expressed in Whole Dollars		<u>Total Governmental</u> <u>Funds</u>
Liabilities And Deferred Inflows Of Resources And Fund Balances		
Liabilities		
0400 Due to Other Funds		
0411 Due to Other Governments		
0412 Due to Primary Government		
0413 Due to Component Unit		
0420 Accounts Payable	1,141,130	
0430 Contracts Payable		
0440 Current Portion of Long-Term Debt		
0450 Short-Term Payables		
0461 Accrued Salaries and Benefits	2,115,046	
0462 Payroll Deductions and Withholding		
0480 Unearned Revenues		
0490 Other Current Liabilities	14,262	
Total Liabilities	\$3,270,438	
0950 Deferred Inflows of Resources	440,518	
Fund Balances		
0810 Nonspendable Fund Balance		
0820 Restricted Fund Balance	1,118	
0830 Committed Fund Balance		
0840 Assigned Fund Balance		
0850 Unassigned Fund Balance	(1,144,547)	
Total Fund Balances	(\$1,143,429)	
Total Liabilities, Deferred Inflows Of Resources And Fund Balances	\$2,567,527	

Amounts Expressed in Whole Dollars	General Fund (10)	Student Sponsored Activity Fund (21)	Public Purpose Trust (27)	Other Compt Approved (28)	Athletic / Activity (29)
Revenues					
6000 Revenue from Local Sources	13,515,824				
7000 Revenue from State Sources	6,892,195				
8000 Revenue from Federal Sources	1,241,094				
Total Revenues	\$21,649,113				
Expenditures					
1000 Instruction	15,430,222				
2000 Support Services	6,279,950				
3000 Operation of Non-Instructional Services	424,684				
4000 Facilities Acquisition, Construction and Improvement Services	13,629				
5110 Debt Service	632,767				
5130 Refund of Prior Year Revenues / Receipts					
Total Expenditures	\$22,781,252				
Excess (Deficiency) Of Revenues Over Expenditures	(\$1,132,139)				
Other Financing Sources (Uses)					
9110 Face Value of Bonds Issued					
9120 Proceeds from Refunding of Bonds	800,000				
9130 Bond Premiums					
9200 Proceeds from Extended-Term Financing					
9300 Interfund Transfers - IN					
9400 Sale of or Compensation for Loss of Fixed Assets					
9710 Transfers from Component Units					
9720 Transfers from Primary Governments					
9910 Other Financing Sources Not Listed in the 9000 Series					
9990 Insurance Recoveries					
5120 Debt Service – Refunded Bonds	737,300				
5150 Bond Discounts					
5200 Interfund Transfers – Out					
5300 Transfers Out to Component Units/Primary Governments					
Total Other Financing Sources (Uses)	\$62,700				

LEA : 122097203 Morrisville Borough SD

Printed 1/27/2021 9:59:26 AM

Amounts Expressed in Whole Dollars	<u>Capital Reserve (690.1850)</u> <u>(31)</u>	<u>Capital Reserve (1431)</u> <u>(32)</u>	<u>Other Capital Projects</u> <u>Fund</u> <u>(39)</u>	<u>Debt Service</u> <u>(40)</u>	<u>Permanent</u> <u>(90)</u>
Revenues					
6000 Revenue from Local Sources		16	24,643		
7000 Revenue from State Sources					
8000 Revenue from Federal Sources					
Total Revenues		\$16	\$24,643		
Expenditures					
1000 Instruction					
2000 Support Services			33,975		
3000 Operation of Non-Instructional Services					
4000 Facilities Acquisition, Construction and Improvement Services			3,415,156		
5110 Debt Service					
5130 Refund of Prior Year Revenues / Receipts					
Total Expenditures			\$3,449,131		
Excess (Deficiency) Of Revenues Over Expenditures		\$16	(\$3,424,488)		
Other Financing Sources (Uses)					
9110 Face Value of Bonds Issued					
9120 Proceeds from Refunding of Bonds					
9130 Bond Premiums					
9200 Proceeds from Extended-Term Financing			33,975		
9300 Interfund Transfers - IN					
9400 Sale of or Compensation for Loss of Fixed Assets					
9710 Transfers from Component Units					
9720 Transfers from Primary Governments					
9910 Other Financing Sources Not Listed in the 9000 Series					
9990 Insurance Recoveries					
5120 Debt Service – Refunded Bonds					
5150 Bond Discounts					
5200 Interfund Transfers – Out					
5300 Transfers Out to Component Units/Primary Governments					
Total Other Financing Sources (Uses)			\$33,975		

Amounts Expressed in Whole Dollars		<u>Total Governmental Funds</u>
Revenues		
6000	Revenue from Local Sources	13,540,483
7000	Revenue from State Sources	6,892,195
8000	Revenue from Federal Sources	1,241,094
Total Revenues		\$21,673,772
Expenditures		
1000	Instruction	15,430,222
2000	Support Services	6,313,925
3000	Operation of Non-Instructional Services	424,684
4000	Facilities Acquisition, Construction and Improvement Services	3,428,785
5110	Debt Service	632,767
5130	Refund of Prior Year Revenues / Receipts	
Total Expenditures		\$26,230,383
Excess (Deficiency) Of Revenues Over Expenditures		(\$4,556,611)
Other Financing Sources (Uses)		
9110	Face Value of Bonds Issued	
9120	Proceeds from Refunding of Bonds	800,000
9130	Bond Premiums	
9200	Proceeds from Extended-Term Financing	33,975
9300	Interfund Transfers - IN	
9400	Sale of or Compensation for Loss of Fixed Assets	
9710	Transfers from Component Units	
9720	Transfers from Primary Governments	
9910	Other Financing Sources Not Listed in the 9000 Series	
9990	Insurance Recoveries	
5120	Debt Service – Refunded Bonds	737,300
5150	Bond Discounts	
5200	Interfund Transfers – Out	
5300	Transfers Out to Component Units/Primary Governments	
Total Other Financing Sources (Uses)		\$96,675

Amounts Expressed in Whole Dollars		<u>General Fund</u> <u>(10)</u>	<u>Student Sponsored</u> <u>Activity Fund</u> <u>(21)</u>	<u>Public Purpose Trust</u> <u>(27)</u>	<u>Other Compt Approved</u> <u>(28)</u>	<u>Athletic / Activity</u> <u>(29)</u>
Special And Extraordinary Items						
9920	Special Items – Gains					
9930	Extraordinary Items – Gains					
5520	Special Items – Losses					
5530	Extraordinary Items – Losses					
Net Change In Fund Balances		(\$1,069,439)				
Fund Balance						
0001	Fund Balance - Beginning of Fiscal Year	(75,108)				
Fund Balance - End Of Year		(\$1,144,547)				

Amounts Expressed in Whole Dollars		<u>Capital Reserve (690.</u> <u>1850)</u> <u>(31)</u>	<u>Capital Reserve (1431)</u> <u>(32)</u>	<u>Other Capital Projects</u> <u>Fund</u> <u>(39)</u>	<u>Debt Service</u> <u>(40)</u>	<u>Permanent</u> <u>(90)</u>
Special And Extraordinary Items						
9920 Special Items – Gains						
9930 Extraordinary Items – Gains						
5520 Special Items – Losses						
5530 Extraordinary Items – Losses						
Net Change In Fund Balances			\$16	(\$3,390,513)		
Fund Balance						
0001 Fund Balance - Beginning of Fiscal Year			1,074	3,390,541		
Fund Balance - End Of Year			\$1,090	\$28		

Amounts Expressed in Whole Dollars		<u>Total Governmental</u> <u>Funds</u>
Special And Extraordinary Items		
9920	Special Items – Gains	
9930	Extraordinary Items – Gains	
5520	Special Items – Losses	
5530	Extraordinary Items – Losses	
Net Change In Fund Balances		(\$4,459,936)
Fund Balance		
0001	Fund Balance - Beginning of Fiscal Year	3,316,507
Fund Balance - End Of Year		(\$1,143,429)

LEA : 122097203 Morrisville Borough SD

Printed 1/27/2021 9:59:31 AM

Amounts Expressed in Whole Dollars	<u>Food Service</u> <u>(51)</u>	<u>Child Care</u> <u>Operations</u> <u>(52)</u>	<u>Other Enterprise</u> <u>(58)</u>	<u>TOTAL</u>	<u>Internal Service</u> <u>(60)</u>
Assets And Deferred Outflows Of Resources					
Current Assets					
0100 Cash and Cash Equivalents	114,356			114,356	
0110 Investments					
0130 Due From Other Funds					
0141 Due From Other Governments	19,982			19,982	
0142 State Revenue Receivable					
0143 Federal Revenue Receivable					
0146 Due from Primary Government					
0147 Due from Component Unit					
0150 Other Receivables					
0170 Inventories	6,650			6,650	
0180 Prepaid Expenses (Expenditures)					478,161
0190 Other Current Assets					
Total Current Assets	\$140,988			\$140,988	\$478,161
Noncurrent Assets					
0211 Land					
0212 Site Improvements (Net)					
0220 Buildings and Building Improvements (Net)					
0230 Machinery, Equipment and Furniture (Net)	6,329			6,329	
0250 Construction in Progress					
0260 Long Term Prepayments					
0290 Other Noncurrent Assets					
Total Noncurrent Assets	\$6,329			\$6,329	
0910 Deferred Outflows of Resources					
Total Assets And Deferred Outflows Of Resources	\$147,317			\$147,317	\$478,161

Amounts Expressed in Whole Dollars	<u>Food Service</u> (51)	<u>Child Care</u> <u>Operations</u> (52)	<u>Other Enterprise</u> (58)	<u>TOTAL</u>	<u>Internal Service</u> (60)
Liabilities And Deferred Inflows Of Resources And Net Position					
Current Liabilities					
0400 Due to Other Funds					
0411 Due to Other Governments					
0413 Due to Component Unit					
0420 Accounts Payable	64,992			64,992	
0430 Contracts Payable					
0440 Current Portion of Long-Term Debt					
0450 Short-Term Payables					
0461 Accrued Salaries and Benefits					
0462 Payroll Deductions and Withholding					
0480 Unearned Revenues					
0490 Other Current Liabilities					
Total Current Liabilities	\$64,992			\$64,992	
Noncurrent Liabilities					
0510 Bonds Payable					
0520 Extended-Term Financing Agreements Payable					
0530 Lease-Purchase Obligations					
0540 Accumulated Compensated Absences					
0550 Authority Lease Obligations					
0560 Other Post-Employment Benefits (OPEB)					
0570 Net Pension Liability					
0599 Other Noncurrent Liabilities					
Total Noncurrent Liabilities					
Total Liabilities	\$64,992			\$64,992	
0950 Deferred Inflows of Resources					
Net Position					
0791 Net Investment in Capital Assets	6,329			6,329	
0008 Restricted Net Position (0792 – 0798)					
0799 Unrestricted Net Position	75,996			75,996	478,161
Total Net Position	\$82,325			\$82,325	\$478,161
Total Liabilities And Deferred Inflows Of Resources And Net Position	\$147,317			\$147,317	\$478,161

Amounts Expressed in Whole Dollars	<u>Food Service</u> <u>(51)</u>	<u>Child Care Operations</u> <u>(52)</u>	<u>Other Enterprise</u> <u>(58)</u>	<u>TOTAL</u>	<u>Internal Service</u> <u>(60)</u>
Operating Revenues					
6600 Food Service Revenue	76,862			76,862	
0071 Charges for Services					
0072 Other Operating Revenue					1,207,883
Total Operating Revenues	\$76,862			\$76,862	\$1,207,883
Operating Expenses					
100 Personnel Services – Salaries					
200 Personnel Services – Employee Benefits					984,795
300 Purchased Professional and Technical Services					
400 Purchased Property Services					
500 Other Purchased Services	202,344			202,344	
600 Supplies	156,082			156,082	
740 Depreciation	1,533			1,533	
810 Dues and Fees	315			315	
890 Miscellaneous Expenditures					
Total Operating Expenses	\$360,274			\$360,274	\$984,795
Operating Income (Loss)	(\$283,412)			(\$283,412)	\$223,088
Non Operating Revenues (Expenses)					
6500 Earnings on Investments					
6920 Contributions and Donations from Private Sources					
6930 Gains or Losses on Sale of Fixed Assets					
6991 Refunds of a Prior Year Expenditure					
7000 Revenue from State Sources	13,491			13,491	
8000 Revenue from Federal Sources	321,502			321,502	
9990 Insurance Recoveries					
820 Claims and Judgments Against the LEA					
830 Interest					
TOTAL Non Operating Revenues (Expenses)	\$334,993			\$334,993	
Income (Loss) Before Contributions And Transfers	\$51,581			\$51,581	\$223,088

Amounts Expressed in Whole Dollars	<u>Food Service</u> <u>(51)</u>	<u>Child Care Operations</u> <u>(52)</u>	<u>Other Enterprise</u> <u>(58)</u>	<u>TOTAL</u>	<u>Internal Service</u> <u>(60)</u>
Contributions, Transfers, and Special and Extraordinary Items					
5200 Interfund Transfers – Out					
5300 Transfers Out to Component Units/Primary Governments					
5520 Special Items – Losses					
5530 Extraordinary Items – Losses					
9300 Interfund Transfers - IN					
9500 Capital Contributions					
9700 Transfers IN From Component Units/Primary Governments					
9920 Special Items – Gains					
9930 Extraordinary Items – Gains					
Change In Net Position	\$51,581			\$51,581	\$223,088
0002 Net Position - Beginning of Fiscal Year	30,744			30,744	255,073
0003 Accounting Changes / Residual Equity Transfers					
Net Position - End Of Year	\$82,325			\$82,325	\$478,161

LEA : 122097203 Morrisville Borough SD

Printed 1/27/2021 9:59:47 AM

Amounts Expressed in Whole Dollars	<u>Food Service</u> <u>(51)</u>	<u>Child Care Operations</u> <u>(52)</u>	<u>Other Enterprise</u> <u>(58)</u>	<u>TOTAL</u>	<u>Internal Service(60)</u>
Cash Flows From Operating Activities					
0011 Cash Receipts From Users	76,862			76,862	
0012 Cash Receipts From Assessments Made to Other Funds					1,207,883
0013 Cash Receipts From Earnings on Investments					
0014 Cash Receipts From Other Operating Revenue					
0015 Cash Payments To Employees For Services					
0016 Cash Payments For Insurance Claims					1,207,883
0017 Cash Payments To Suppliers For Goods and Services					
0018 Cash Payments For Other Operating Expenses	385,860			385,860	
Net Cash Provided By (Used For) Operating Activities	(\$308,998)			(\$308,998)	\$0
Cash Flows From Non-Capital Financing Activities					
0021 Receipts From Local Sources - 6000					
0022 Receipts From State Sources - 7000	15,089			15,089	
0023 Receipts From Federal Sources -8000	333,687			333,687	
0024 Notes and Loans Received (Repaid)					
0025 Interest Paid on Notes/Loans - 5100-830					
0026 Operating Transfers In (Out)/Residual Equity Trans					
0027 Operating Transfers In (Out) Primary Government / Comp Unit					
0028 Receipts From Refund of Prior Year Expenditures - 6991					
0029 Special and Extraordinary Gains (losses)					
0030 Receipts from Insurance Recoveries -9990					
Net Cash Prov By (Used for) Non-Capital Financing Activities	\$348,776			\$348,776	
Cash Flows From Capital and Related Financing Activities					
0031 Payments For Fac Acq, Const, and Imp - 4000					
0032 Gain / (Loss) on Sale of Fixed Assets - 6930					
0033 Proceeds From Extended Term Financing - 9200					
0034 Principal Paid on Financing Agreements					
0035 Interest Paid on Financing Agreements - 5100-830					
0036 (Inc) Dec in Contributed Capital					
Net Cash Prov By (Used for) Capital and Related Financing Activities					
Cash Flows From Investing Activities					
0041 Earnings on Investments - 6500					
0042 Purchase of Inv Securities / Deposits to Inv Pools					
0043 Receipts From Investment Pool Withdrawals					
0044 Proceeds from Sale and Maturity of Inv Securities					

LEA : 122097203 Morrisville Borough SD

Printed 1/27/2021 9:59:47 AM

0045 Loans Received (Paid)

Net Cash Prov By (Used for) Investing Activities

LEA : 122097203 Morrisville Borough SD

Printed 1/27/2021 9:59:47 AM

	Food Service (51)	Child Care Operations (52)	Other Enterprise (58)	TOTAL	Internal Service (60)
Net Increase (Decrease) in Cash Flows	39,778			39,778	
0004 Cash and Cash Equivalents Beginning of Year	74,578			74,578	
Cash and Cash Equivalents at Year End	\$114,356			\$114,356	
Reconciliation of Operating Income (Loss) To Net Cash Provided by (Used For) Operating Activities					
0005 Operating Income (Loss) per REP	(283,412)			(283,412)	223,088
Adjustments					
0051 Depreciation and Net Amortization	1,533			1,533	
0052 Provision for Uncollectible Accounts					
0053 Other Adjustments	21,237			21,237	
Effect of Changes in Assets, Liabilities, Deferred Outflows and Deferred Inflows					
0054 (Inc) Dec In Accounts Receivable (0120-0150)					
0055 Advances to Other Funds (0160)					
0056 (Inc) Dec in Inventories (0170)	(1,210)			(1,210)	
0057 (Inc) Dec in Prepaid Expenses (0180)					(223,088)
0058 (Inc) Dec in Other Current or Noncurrent Assets					
0064 Deferred Outflows (0910)					
0059 Inc (Dec) in Accounts Payable (0400-0450)	(47,146)			(47,146)	
0060 Inc (Dec) in Accrued Salaries/Benefits (0461)					
0065 Inc (Dec) in Net Pension Liabilities (0570)					
0066 Inc (Dec) in Other Postemp Benefit Oblig (0560)					
0061 Inc (Dec) in Payroll Deductions/Withholding (0462)					
0062 Inc (Dec) in Unearned Revenue (0480)					
0063 Inc (Dec) in Other Current or Noncurrent Liabilities					
0067 Deferred Inflows (0950)					
Total Adjustments	(\$25,586)			(\$25,586)	(\$223,088)
Cash Provided By (Used for) Total	(\$308,998)			(\$308,998)	

COMBINED STATEMENT OF CASH FLOWS
SCHEDULE OF NONCASH INVESTING, CAPITAL, AND FINANCING ACTIVITIES

Explanation of Transaction and Balance Sheet Effect	Amount
USDA DONATED COMMODITY VALUE	21,237
Total	\$21,237

LEA : 122097203 Morrisville Borough SD

Printed 1/27/2021 9:59:50 AM

Amounts Expressed in Whole Dollars	Private Purpose Trust (71)	Investment Trust (72)	Pension Trust (73)	Student Activity Custodial (81)
Assets And Deferred Outflows Of Resources				
Assets				
0100 Cash and Cash Equivalents	22,981			39,866
0110 Investments				
0130 Due From Other Funds				
0140 Due from Other Governments, Primary Government and Component Units				
0150 Other Receivables				
0170 Inventories				
0180 Prepaid Expenses (Expenditures)				
0190 Other Current Assets				
0220 Buildings and Building Improvements (Net)				
0230 Machinery, Equipment and Furniture (Net)				
Total Assets	\$22,981			\$39,866
0910 Deferred Outflows of Resources				
Total Assets And Deferred Outflows Of Resources	\$22,981			\$39,866

LEA : 122097203 Morrisville Borough SD

Printed 1/27/2021 9:59:50 AM

Amounts Expressed in Whole Dollars		<u>Other Custodial</u> <u>(89)</u>	<u>Fiduciary Component Units</u> <u>(98)</u>	<u>Total Fiduciary Funds</u>
Assets And Deferred Outflows Of Resources				
Assets				
0100	Cash and Cash Equivalents			62,847
0110	Investments			
0130	Due From Other Funds			
0140	Due from Other Governments, Primary Government and Component Units			
0150	Other Receivables			
0170	Inventories			
0180	Prepaid Expenses (Expenditures)			
0190	Other Current Assets			
0220	Buildings and Building Improvements (Net)			
0230	Machinery, Equipment and Furniture (Net)			
Total Assets				\$62,847
0910	Deferred Outflows of Resources			
Total Assets And Deferred Outflows Of Resources				\$62,847

LEA : 122097203 Morrisville Borough SD

Printed 1/27/2021 9:59:50 AM

Amounts Expressed in Whole Dollars		<u>Private Purpose Trust</u>	<u>Investment Trust</u>	<u>Pension Trust</u>	<u>Student Activity Custodial</u>
		<u>(71)</u>	<u>(72)</u>	<u>(73)</u>	<u>(81)</u>
Liabilities, Deferred Inflows Of Resources And Net Position					
Liabilities					
0400	Due to Other Funds				
0410	Due to Other Governments, Primary Government and Component Units				
0420	Accounts Payable				
0430	Contracts Payable				
0450	Short-Term Payables				
0460	Payroll Accruals and Withholdings				
0480	Unearned Revenues				
0490	Other Current Liabilities				39,866
Total Liabilities					\$39,866
0950	Deferred Inflows of Resources				
Net Position					
0791	Net Investment in Capital Assets				
0009	Restricted Net Position (0792 – 0798)	22,981			
0799	Unrestricted Net Position				
Total Net Position		\$22,981			
Total Liabilities, Deferred Inflows Of Resources And Net Position		\$22,981			\$39,866

LEA : 122097203 Morrisville Borough SD

Printed 1/27/2021 9:59:50 AM

Amounts Expressed in Whole Dollars		<u>Other Custodial</u> <u>(89)</u>	<u>Fiduciary Component Units</u> <u>(98)</u>	<u>Total Fiduciary Funds</u>
Liabilities, Deferred Inflows Of Resources And Net Position				
Liabilities				
0400	Due to Other Funds			
0410	Due to Other Governments, Primary Government and Component Units			
0420	Accounts Payable			
0430	Contracts Payable			
0450	Short-Term Payables			
0460	Payroll Accruals and Withholdings			
0480	Unearned Revenues			
0490	Other Current Liabilities			39,866
Total Liabilities				\$39,866
0950	Deferred Inflows of Resources			
Net Position				
0791	Net Investment in Capital Assets			
0009	Restricted Net Position (0792 – 0798)			22,981
0799	Unrestricted Net Position			
Total Net Position				\$22,981
Total Liabilities, Deferred Inflows Of Resources And Net Position				\$62,847

LEA : 122097203 Morrisville Borough SD

Printed 1/27/2021 9:59:53 AM

Amounts Expressed in Whole Dollars	<u>Private Purpose Trust</u> <u>(71)</u>	<u>Investment Trust</u> <u>(72)</u>	<u>Pension Trust</u> <u>(73)</u>	<u>Student Activity</u> <u>Custodial</u> <u>(81)</u>	<u>Other Custodial</u> <u>(89)</u>	<u>Fiduciary Component</u> <u>Units</u> <u>(98)</u>
Additions						
0091 Gifts and Contributions	1,590					
0095 Net Investment Earnings						
0092 Other Additions						
Deductions						
0093 Scholarships Awarded						
0094 Other Deductions	2,365					
Change In Net Position	(\$775)					
0006 Net Position – Beginning of Fiscal Year	23,756					
0007 Net Position Held in Trust for Pension Benefits						
Net Position - End of Fiscal Year	\$22,981					

Amounts Expressed in Whole Dollars		<u>Total Fiduciary</u>
		<u>Funds</u>
Additions		
0091	Gifts and Contributions	1,590
0095	Net Investment Earnings	
0092	Other Additions	
Deductions		
0093	Scholarships Awarded	
0094	Other Deductions	2,365
Change In Net Position		(\$775)
0006	Net Position – Beginning of Fiscal Year	23,756
0007	Net Position Held in Trust for Pension Benefits	
Net Position - End of Fiscal Year		\$22,981

	Revenue Reported In Current Year	Current Year Tax Accrual	Prior Year Tax Accrual	Taxes Collected In Current Year
Revenue from Local Sources				
6111 Current Real Estate Taxes	12,663,228.00			12,663,228.00
6113 Public Utility Realty Taxes	10,838.00			10,838.00
6153 Current Act 511 Real Estate Transfer Taxes	218,241.00	12,072.00	9,897.00	216,066.00
6411 Delinquent Real Estate Taxes	243,018.00	75,966.00	49,055.00	216,107.00
6500 Earnings on Investments	67,358.00			
6700 Revenues from LEA Activities	2,391.00			
6832 Federal IDEA Revenue Received as Pass Through	208,437.00			
6910 Rentals	12,991.00			
6999 Other Revenues Not Specified Above	89,322.00			
TOTAL Revenue from Local Sources	\$13,515,824.00	\$88,038.00	\$58,952.00	\$13,106,239.00

	Revenue Reported In Current Year			
<u>Revenue from State Sources</u>				
7111 Basic Education Funding-Formula	3,152,324.00			
7112 Basic Education Funding-Social Security	280,420.00			
7271 Special Education funds for School-Aged Pupils	896,145.00			
7311 Pupil Transportation Subsidy	32,615.00			
7330 Health Services (Medical, Dental, Nurse, Act 25)	21,150.00			
7340 State Property Tax Reduction Allocation	386,657.00			
7361 School Safety and Security Grants	80,000.00			
7505 Ready to Learn Block Grant	119,607.00			
7598 Revenue for the Support of Public Schools	500,000.00			
7599 Other State Revenue Not Listed Elsewhere in the 7000 Series	77,850.00			
7820 State Share of Retirement Contributions	1,345,427.00			
TOTAL Revenue from State Sources	\$6,892,195.00			

	Revenue Reported In Current Year			
<u>Revenue from Federal Sources</u>				
8514 NCLB, Title I - Improving the Academic Achievement of the Disadvantaged	232,773.00			
8515 NCLB, Title II - Preparing, Training and Recruiting High Quality Teachers and Principals	39,393.00			
8517 NCLB, Title IV - 21St Century Schools	842,797.00			
8741 Elementary and Secondary School Emergency Relief Fund (ESSER)	20,118.00			
8810 School-Based Access Medicaid Reimbursement Program (SBAP) Reimbursements (Access)	99,258.00			
8820 Medical Assistance Reimbursement for Administrative Claiming (Quarterly) Program	6,755.00			
TOTAL Revenue from Federal Sources	\$1,241,094.00			

	Revenue Reported In Current Year			
<u>Other Financing Sources</u>				
9120 Proceeds from Refunding of Bonds	800,000.00			
TOTAL Other Financing Sources	\$800,000.00			
TOTAL FROM ALL SOURCES	\$22,449,113.00	\$88,038.00	\$58,952.00	\$13,106,239.00

LEA : 122097203 Morrisville Borough SD

Printed 1/27/2021 10:00:06 AM

	<u>General Fund (10)</u>	<u>Student Sponsored Activity Fund (21)</u>	<u>Public Purpose Trust (27)</u>	<u>Other Compt Approved (28)</u>	<u>Athletic / Activity (29)</u>	<u>Capital Reserve (690, 1850) (31)</u>
6000 Revenue from Local Sources						
6111 Current Real Estate Taxes	12,663,228.00					
6113 Public Utility Realty Taxes	10,838.00					
6153 Current Act 511 Real Estate Transfer Taxes	218,241.00					
6411 Delinquent Real Estate Taxes	243,018.00					
6500 Earnings on Investments	67,358.00					
6700 Revenues from LEA Activities	2,391.00					
6832 Federal IDEA Revenue Received as Pass Through	208,437.00					
6910 Rentals	12,991.00					
6999 Other Revenues Not Specified Above	89,322.00					
6000 Total Revenue from Local Sources	\$13,515,824.00					
7000 Revenue from State Sources						
7111 Basic Education Funding-Formula	3,152,324.00					
7112 Basic Education Funding-Social Security	280,420.00					
7271 Special Education funds for School-Aged Pupils	896,145.00					
7311 Pupil Transportation Subsidy	32,615.00					
7330 Health Services (Medical, Dental, Nurse, Act 25)	21,150.00					
7340 State Property Tax Reduction Allocation	386,657.00					
7361 School Safety and Security Grants	80,000.00					
7505 Ready to Learn Block Grant	119,607.00					
7598 Revenue for the Support of Public Schools	500,000.00					
7599 Other State Revenue Not Listed Elsewhere in the 7000 Series	77,850.00					
7820 State Share of Retirement Contributions	1,345,427.00					
7000 Total Revenue from State Sources	\$6,892,195.00					
8000 Revenue from Federal Sources						
8514 NCLB, Title I - Improving the Academic Achievement of the Disadvantaged	232,773.00					
8515 NCLB, Title II - Preparing, Training and Recruiting High Quality Teachers and Principals	39,393.00					
8517 NCLB, Title IV - 21St Century Schools	842,797.00					
8741 Elementary and Secondary School Emergency Relief Fund (ESSER)	20,118.00					
8810 School-Based Access Medicaid Reimbursement Program (SBAP) Reimbursements (Access)	99,258.00					
8820 Medical Assistance Reimbursement for Administrative Claiming (Quarterly) Program	6,755.00					
8000 Total Revenue from Federal Sources	\$1,241,094.00					
9000 Other Financing Sources						
9120 Proceeds from Refunding of Bonds	800,000.00					

LEA : 122097203 Morrisville Borough SD

Printed 1/27/2021 10:00:06 AM

	Capital Reserve (1431) (32)	Other Capital Projects Fund (39)	Debt Service (40)	Permanent (90)	Total
6000 Revenue from Local Sources					
6111 Current Real Estate Taxes					12,663,228.00
6113 Public Utility Realty Taxes					10,838.00
6153 Current Act 511 Real Estate Transfer Taxes					218,241.00
6411 Delinquent Real Estate Taxes					243,018.00
6500 Earnings on Investments	16.00	24,643.00			92,017.00
6700 Revenues from LEA Activities					2,391.00
6832 Federal IDEA Revenue Received as Pass Through					208,437.00
6910 Rentals					12,991.00
6999 Other Revenues Not Specified Above					89,322.00
6000 Total Revenue from Local Sources	\$16.00	\$24,643.00			\$13,540,483.00
7000 Revenue from State Sources					
7111 Basic Education Funding-Formula					3,152,324.00
7112 Basic Education Funding-Social Security					280,420.00
7271 Special Education funds for School-Aged Pupils					896,145.00
7311 Pupil Transportation Subsidy					32,615.00
7330 Health Services (Medical, Dental, Nurse, Act 25)					21,150.00
7340 State Property Tax Reduction Allocation					386,657.00
7361 School Safety and Security Grants					80,000.00
7505 Ready to Learn Block Grant					119,607.00
7598 Revenue for the Support of Public Schools					500,000.00
7599 Other State Revenue Not Listed Elsewhere in the 7000 Series					77,850.00
7820 State Share of Retirement Contributions					1,345,427.00
7000 Total Revenue from State Sources					\$6,892,195.00
8000 Revenue from Federal Sources					
8514 NCLB, Title I - Improving the Academic Achievement of the Disadvantaged					232,773.00
8515 NCLB, Title II - Preparing, Training and Recruiting High Quality Teachers and Principals					39,393.00
8517 NCLB, Title IV - 21St Century Schools					842,797.00
8741 Elementary and Secondary School Emergency Relief Fund (ESSER)					20,118.00
8810 School-Based Access Medicaid Reimbursement Program (SBAP) Reimbursements (Access)					99,258.00
8820 Medical Assistance Reimbursement for Administrative Claiming (Quarterly) Program					6,755.00
8000 Total Revenue from Federal Sources					\$1,241,094.00
9000 Other Financing Sources					
9120 Proceeds from Refunding of Bonds					800,000.00

LEA : 122097203 Morrisville Borough SD

Printed 1/27/2021 10:00:06 AM

	<u>General Fund (10)</u>	<u>Student Sponsored Activity Fund (21)</u>	<u>Public Purpose Trust (27)</u>	<u>Other Compt Approved (28)</u>	<u>Athletic / Activity (29)</u>	<u>Capital Reserve (690, 1850) (31)</u>
9000 Other Financing Sources						
9290 Other Extended-Term Financing Proceeds						
9000 Total Other Financing Sources	\$800,000.00					
Total From All Sources	\$22,449,113.00					

LEA : 122097203 Morrisville Borough SD

Printed 1/27/2021 10:00:06 AM

	<u>Capital Reserve</u> <u>(1431) (32)</u>	<u>Other Capital</u> <u>Projects Fund (39)</u>	<u>Debt Service (40)</u>	<u>Permanent (90)</u>	<u>Total</u>
9000 Other Financing Sources					
9290 Other Extended-Term Financing Proceeds		33,975.00			33,975.00
9000 Total Other Financing Sources		\$33,975.00			\$833,975.00
Total From All Sources	\$16.00	\$58,618.00			\$22,507,747.00

LEA : 122097203 Morrisville Borough SD

Printed 1/27/2021 10:00:14 AM

	<u>General Fund (10)</u>	<u>Student Sponsored Activity Fund (21)</u>	<u>Public Purpose Trust (27)</u>	<u>Other Compt Approved (28)</u>	<u>Athletic / Activity (29)</u>	<u>Capital Reserve (690. 1850) (31)</u>
Revenue from Local Sources	13,515,824.00					
Revenue from State Sources	6,892,195.00					
Revenue from Federal Sources	1,241,094.00					
Other Financing Sources	800,000.00					
Total From All Sources	\$22,449,113.00					

LEA : 122097203 Morrisville Borough SD

Printed 1/27/2021 10:00:14 AM

	<u>Capital Reserve (1431)</u> <u>(32)</u>	<u>Other Capital Projects</u> <u>Fund (39)</u>	<u>Debt Service (40)</u>	<u>Permanent (90)</u>	<u>Total</u>
Revenue from Local Sources	16.00	24,643.00			13,540,483.00
Revenue from State Sources					6,892,195.00
Revenue from Federal Sources					1,241,094.00
Other Financing Sources		33,975.00			833,975.00
Total From All Sources	\$16.00	\$58,618.00			\$22,507,747.00

LEA : 122097203 Morrisville Borough SD

Printed 1/27/2021 10:00:22 AM

General Fund (10)	
1000 Instruction	<u>Total</u>
100 <u>Personnel Services – Salaries</u>	
100 Personnel Services – Salaries	6,193,287.00
Total Personnel Services – Salaries	\$6,193,287.00
200 <u>Personnel Services – Employee Benefits</u>	
220 Social Security Contributions	411,348.00
230 PSERS Retirement Contributions	2,004,374.00
250 Unemployment Compensation	20,460.00
260 Workers' Compensation	58,050.00
270 Group Insurance – Self-Insurance	1,308,016.00
299 All Other Employee Benefits	1,500.00
Total Personnel Services – Employee Benefits	\$3,803,748.00
300 <u>Purchased Professional and Technical Services</u>	
310 Official / Administrative Services	114,956.00
322 Professional Educational Services – Ius	2,599,032.00
329 Professional Educational Services – Other	146,609.00
340 Technical Services	37,942.00
Total Purchased Professional and Technical Services	\$2,898,539.00
400 <u>Purchased Property Services</u>	
440 Rentals	11,353.00
Total Purchased Property Services	\$11,353.00
500 <u>Other Purchased Services</u>	
530 Communications	4,250.00
561 Tuition To Other School Districts Within the State	410,082.00
562 Tuition To Pennsylvania Charter Schools	1,043,395.00
564 Tuition To Career and Technology Centers	726,978.00
567 Tuition To Approved Private Schools (APS) and PA Chartered Schools for the Deaf and Blind	83,875.00
568 Tuition To Private Residential Rehabilitative Institutions (PRRI) [In-State] and Detention Centers	77,835.00
569 Tuition – Other	375.00
580 Travel	4,965.00
599 Other Miscellaneous Purchased Services	11,013.00
Total Other Purchased Services	\$2,362,768.00
600 <u>Supplies</u>	
610 General Supplies	144,879.00
640 Books and Periodicals	5,648.00
Total Supplies	\$150,527.00
700 <u>Property</u>	
752 Capital Equipment – Original and Additional	10,000.00
Total Property	\$10,000.00
Total 1000 Instruction	\$15,430,222.00

LEA : 122097203 Morrisville Borough SD

Printed 1/27/2021 10:00:22 AM

General Fund (10)

1100 Regular Programs – Elementary / Secondary	Elementary	Secondary	Federal	Total
100 Personnel Services – Salaries				
100 Personnel Services – Salaries	1,099,675.00	2,725,582.00	566,110.00	4,391,367.00
Total Personnel Services – Salaries	\$1,099,675.00	\$2,725,582.00	\$566,110.00	\$4,391,367.00
200 Personnel Services – Employee Benefits				
220 Social Security Contributions	92,673.00	153,028.00	9,062.00	254,763.00
230 PSERS Retirement Contributions	378,782.00	938,827.00	66,097.00	1,383,706.00
250 Unemployment Compensation	20,460.00			20,460.00
260 Workers' Compensation	8,031.00	36,029.00		44,060.00
270 Group Insurance – Self-Insurance	200,881.00	495,735.00	87,897.00	784,513.00
299 All Other Employee Benefits	1,500.00			1,500.00
Total Personnel Services – Employee Benefits	\$702,327.00	\$1,623,619.00	\$163,056.00	\$2,489,002.00
300 Purchased Professional and Technical Services				
310 Official / Administrative Services	28,416.00	86,540.00		114,956.00
329 Professional Educational Services – Other		6,769.00	139,840.00	146,609.00
Total Purchased Professional and Technical Services	\$28,416.00	\$93,309.00	\$139,840.00	\$261,565.00
400 Purchased Property Services				
440 Rentals	4,772.00	1,455.00	5,126.00	11,353.00
Total Purchased Property Services	\$4,772.00	\$1,455.00	\$5,126.00	\$11,353.00
500 Other Purchased Services				
530 Communications		4,250.00		4,250.00
562 Tuition To Pennsylvania Charter Schools	433,051.00	372,564.00		805,615.00
580 Travel		4,059.00		4,059.00
599 Other Miscellaneous Purchased Services			11,013.00	11,013.00
Total Other Purchased Services	\$433,051.00	\$380,873.00	\$11,013.00	\$824,937.00
600 Supplies				
610 General Supplies	16,892.00	21,323.00	73,199.00	111,414.00
640 Books and Periodicals	3,349.00	779.00	647.00	4,775.00
Total Supplies	\$20,241.00	\$22,102.00	\$73,846.00	\$116,189.00
Total 1100 Regular Programs – Elementary / Secondary	\$2,288,482.00	\$4,846,940.00	\$958,991.00	\$8,094,413.00

LEA : 122097203 Morrisville Borough SD

Printed 1/27/2021 10:00:22 AM

General Fund (10)				
1110 Regular Programs	<u>Elementary</u>	<u>Secondary</u>	<u>Federal</u>	<u>Total</u>
100 <u>Personnel Services – Salaries</u>				
100 Personnel Services – Salaries	1,099,675.00	2,725,582.00		3,825,257.00
Total Personnel Services – Salaries	\$1,099,675.00	\$2,725,582.00		\$3,825,257.00
200 <u>Personnel Services – Employee Benefits</u>				
220 Social Security Contributions	92,673.00	153,028.00		245,701.00
230 PSERS Retirement Contributions	378,782.00	938,827.00		1,317,609.00
250 Unemployment Compensation	20,460.00			20,460.00
260 Workers' Compensation	8,031.00	36,029.00		44,060.00
270 Group Insurance – Self-Insurance	200,881.00	495,735.00		696,616.00
299 All Other Employee Benefits	1,500.00			1,500.00
Total Personnel Services – Employee Benefits	\$702,327.00	\$1,623,619.00		\$2,325,946.00
300 <u>Purchased Professional and Technical Services</u>				
310 Official / Administrative Services	28,416.00	86,540.00		114,956.00
329 Professional Educational Services – Other		6,769.00		6,769.00
Total Purchased Professional and Technical Services	\$28,416.00	\$93,309.00		\$121,725.00
400 <u>Purchased Property Services</u>				
440 Rentals	4,772.00	1,455.00		6,227.00
Total Purchased Property Services	\$4,772.00	\$1,455.00		\$6,227.00
500 <u>Other Purchased Services</u>				
530 Communications		4,250.00		4,250.00
562 Tuition To Pennsylvania Charter Schools	433,051.00	372,564.00		805,615.00
580 Travel		4,059.00		4,059.00
Total Other Purchased Services	\$433,051.00	\$380,873.00		\$813,924.00
600 <u>Supplies</u>				
610 General Supplies	16,892.00	21,323.00		38,215.00
640 Books and Periodicals	3,349.00	779.00		4,128.00
Total Supplies	\$20,241.00	\$22,102.00		\$42,343.00
Total 1110 Regular Programs	\$2,288,482.00	\$4,846,940.00		\$7,135,422.00

LEA : 122097203 Morrisville Borough SD

Printed 1/27/2021 10:00:22 AM

General Fund (10)				
1190 Federally-Funded Regular Programs	<u>Elementary</u>	<u>Secondary</u>	<u>Federal</u>	<u>Total</u>
100 <u>Personnel Services – Salaries</u>				
100 Personnel Services – Salaries			566,110.00	566,110.00
Total Personnel Services – Salaries			\$566,110.00	\$566,110.00
200 <u>Personnel Services – Employee Benefits</u>				
220 Social Security Contributions			9,062.00	9,062.00
230 PSERS Retirement Contributions			66,097.00	66,097.00
270 Group Insurance – Self-Insurance			87,897.00	87,897.00
Total Personnel Services – Employee Benefits			\$163,056.00	\$163,056.00
300 <u>Purchased Professional and Technical Services</u>				
329 Professional Educational Services – Other			139,840.00	139,840.00
Total Purchased Professional and Technical Services			\$139,840.00	\$139,840.00
400 <u>Purchased Property Services</u>				
440 Rentals			5,126.00	5,126.00
Total Purchased Property Services			\$5,126.00	\$5,126.00
500 <u>Other Purchased Services</u>				
599 Other Miscellaneous Purchased Services			11,013.00	11,013.00
Total Other Purchased Services			\$11,013.00	\$11,013.00
600 <u>Supplies</u>				
610 General Supplies			73,199.00	73,199.00
640 Books and Periodicals			647.00	647.00
Total Supplies			\$73,846.00	\$73,846.00
Total 1190 Federally-Funded Regular Programs			\$958,991.00	\$958,991.00

LEA : 122097203 Morrisville Borough SD

Printed 1/27/2021 10:00:22 AM

General Fund (10)				
1200 Special Programs – Elementary / Secondary	<u>Elementary</u>	<u>Secondary</u>	<u>Federal</u>	<u>Total</u>
100 <u>Personnel Services – Salaries</u>				
100 Personnel Services – Salaries	683,199.00	1,017,936.00	63,177.00	1,764,312.00
Total Personnel Services – Salaries	\$683,199.00	\$1,017,936.00	\$63,177.00	\$1,764,312.00
200 <u>Personnel Services – Employee Benefits</u>				
220 Social Security Contributions	66,618.00	81,676.00	4,833.00	153,127.00
230 PSERS Retirement Contributions	235,321.00	350,730.00	21,663.00	607,714.00
260 Workers’ Compensation		12,105.00		12,105.00
270 Group Insurance – Self-Insurance	214,380.00	296,468.00	9,585.00	520,433.00
Total Personnel Services – Employee Benefits	\$516,319.00	\$740,979.00	\$36,081.00	\$1,293,379.00
300 <u>Purchased Professional and Technical Services</u>				
322 Professional Educational Services – Ius	737,358.00	1,647,370.00	214,304.00	2,599,032.00
340 Technical Services		37,942.00		37,942.00
Total Purchased Professional and Technical Services	\$737,358.00	\$1,685,312.00	\$214,304.00	\$2,636,974.00
500 <u>Other Purchased Services</u>				
561 Tuition To Other School Districts Within the State	19,344.00	390,738.00		410,082.00
562 Tuition To Pennsylvania Charter Schools		237,780.00		237,780.00
567 Tuition To Approved Private Schools (APS) and PA Chartered Schools for the Deaf and Blind	83,875.00			83,875.00
568 Tuition To Private Residential Rehabilitative Institutions (PRRI) [In-State] and Detention Centers		77,835.00		77,835.00
Total Other Purchased Services	\$103,219.00	\$706,353.00		\$809,572.00
600 <u>Supplies</u>				
610 General Supplies	2,261.00	31,000.00		33,261.00
640 Books and Periodicals		873.00		873.00
Total Supplies	\$2,261.00	\$31,873.00		\$34,134.00
700 <u>Property</u>				
752 Capital Equipment – Original and Additional		10,000.00		10,000.00
Total Property		\$10,000.00		\$10,000.00
Total 1200 Special Programs – Elementary / Secondary	\$2,042,356.00	\$4,192,453.00	\$313,562.00	\$6,548,371.00

LEA : 122097203 Morrisville Borough SD

Printed 1/27/2021 10:00:22 AM

General Fund (10)

1210 Life Skills Support

	<u>Elementary</u>	<u>Secondary</u>	<u>Federal</u>	<u>Total</u>
100 <u>Personnel Services – Salaries</u>				
100 Personnel Services – Salaries		194,193.00		194,193.00
Total Personnel Services – Salaries		\$194,193.00		\$194,193.00
200 <u>Personnel Services – Employee Benefits</u>				
220 Social Security Contributions		15,707.00		15,707.00
230 PSERS Retirement Contributions		66,890.00		66,890.00
260 Workers’ Compensation		1,385.00		1,385.00
270 Group Insurance – Self-Insurance		45,236.00		45,236.00
Total Personnel Services – Employee Benefits		\$129,218.00		\$129,218.00
300 <u>Purchased Professional and Technical Services</u>				
322 Professional Educational Services – Ius		170,168.00		170,168.00
Total Purchased Professional and Technical Services		\$170,168.00		\$170,168.00
500 <u>Other Purchased Services</u>				
561 Tuition To Other School Districts Within the State		366,818.00		366,818.00
Total Other Purchased Services		\$366,818.00		\$366,818.00
Total 1210 Life Skills Support		\$860,397.00		\$860,397.00

LEA : 122097203 Morrisville Borough SD

Printed 1/27/2021 10:00:22 AM

General Fund (10)

1220 Sensory Support

	<u>Elementary</u>	<u>Secondary</u>	<u>Federal</u>	<u>Total</u>
300 <u>Purchased Professional and Technical Services</u>				
322 Professional Educational Services – lus	122,108.00	494,212.00		616,320.00
Total Purchased Professional and Technical Services	\$122,108.00	\$494,212.00		\$616,320.00
Total 1220 Sensory Support	\$122,108.00	\$494,212.00		\$616,320.00

LEA : 122097203 Morrisville Borough SD

Printed 1/27/2021 10:00:22 AM

General Fund (10)				
1230 Emotional Support	<u>Elementary</u>	<u>Secondary</u>	<u>Federal</u>	<u>Total</u>
100 <u>Personnel Services – Salaries</u>				
100 Personnel Services – Salaries	310,789.00	251,482.00		562,271.00
Total Personnel Services – Salaries	\$310,789.00	\$251,482.00		\$562,271.00
200 <u>Personnel Services – Employee Benefits</u>				
220 Social Security Contributions	25,521.00	21,212.00		46,733.00
230 PSERS Retirement Contributions	107,051.00	86,623.00		193,674.00
260 Workers’ Compensation		1,405.00		1,405.00
270 Group Insurance – Self-Insurance	11,388.00	116,362.00		127,750.00
Total Personnel Services – Employee Benefits	\$143,960.00	\$225,602.00		\$369,562.00
300 <u>Purchased Professional and Technical Services</u>				
322 Professional Educational Services – Ius	544,100.00	566,160.00		1,110,260.00
Total Purchased Professional and Technical Services	\$544,100.00	\$566,160.00		\$1,110,260.00
500 <u>Other Purchased Services</u>				
561 Tuition To Other School Districts Within the State		23,920.00		23,920.00
562 Tuition To Pennsylvania Charter Schools		237,780.00		237,780.00
Total Other Purchased Services		\$261,700.00		\$261,700.00
600 <u>Supplies</u>				
610 General Supplies	1,551.00	804.00		2,355.00
Total Supplies	\$1,551.00	\$804.00		\$2,355.00
Total 1230 Emotional Support	\$1,000,400.00	\$1,305,748.00		\$2,306,148.00

LEA : 122097203 Morrisville Borough SD

Printed 1/27/2021 10:00:22 AM

General Fund (10)				
1240 Academic Support	<u>Elementary</u>	<u>Secondary</u>	<u>Federal</u>	<u>Total</u>
100 <u>Personnel Services – Salaries</u>				
100 Personnel Services – Salaries	372,410.00	454,331.00	63,177.00	889,918.00
Total Personnel Services – Salaries	\$372,410.00	\$454,331.00	\$63,177.00	\$889,918.00
200 <u>Personnel Services – Employee Benefits</u>				
220 Social Security Contributions	41,097.00	34,573.00	4,833.00	80,503.00
230 PSERS Retirement Contributions	128,270.00	156,596.00	21,663.00	306,529.00
260 Workers’ Compensation		9,315.00		9,315.00
270 Group Insurance – Self-Insurance	202,992.00	101,641.00	9,585.00	314,218.00
Total Personnel Services – Employee Benefits	\$372,359.00	\$302,125.00	\$36,081.00	\$710,565.00
300 <u>Purchased Professional and Technical Services</u>				
322 Professional Educational Services – Ius			214,304.00	214,304.00
Total Purchased Professional and Technical Services			\$214,304.00	\$214,304.00
500 <u>Other Purchased Services</u>				
561 Tuition To Other School Districts Within the State	19,344.00			19,344.00
Total Other Purchased Services	\$19,344.00			\$19,344.00
600 <u>Supplies</u>				
610 General Supplies	710.00	50.00		760.00
640 Books and Periodicals		873.00		873.00
Total Supplies	\$710.00	\$923.00		\$1,633.00
700 <u>Property</u>				
752 Capital Equipment – Original and Additional		10,000.00		10,000.00
Total Property		\$10,000.00		\$10,000.00
Total 1240 Academic Support	\$764,823.00	\$767,379.00	\$313,562.00	\$1,845,764.00

LEA : 122097203 Morrisville Borough SD

Printed 1/27/2021 10:00:22 AM

General Fund (10)				
1241 Learning Support – Public	<u>Elementary</u>	<u>Secondary</u>	<u>Federal</u>	<u>Total</u>
100 <u>Personnel Services – Salaries</u>				
100 Personnel Services – Salaries	267,857.00	433,409.00	63,177.00	764,443.00
Total Personnel Services – Salaries	\$267,857.00	\$433,409.00	\$63,177.00	\$764,443.00
200 <u>Personnel Services – Employee Benefits</u>				
220 Social Security Contributions	32,630.00	36,478.00	4,833.00	73,941.00
230 PSERS Retirement Contributions	92,257.00	149,390.00	21,663.00	263,310.00
260 Workers’ Compensation		9,315.00		9,315.00
270 Group Insurance – Self-Insurance	182,983.00	96,539.00	9,585.00	289,107.00
Total Personnel Services – Employee Benefits	\$307,870.00	\$291,722.00	\$36,081.00	\$635,673.00
300 <u>Purchased Professional and Technical Services</u>				
322 Professional Educational Services – Ius			214,304.00	214,304.00
Total Purchased Professional and Technical Services			\$214,304.00	\$214,304.00
500 <u>Other Purchased Services</u>				
561 Tuition To Other School Districts Within the State	19,344.00			19,344.00
Total Other Purchased Services	\$19,344.00			\$19,344.00
600 <u>Supplies</u>				
610 General Supplies	642.00	50.00		692.00
640 Books and Periodicals		873.00		873.00
Total Supplies	\$642.00	\$923.00		\$1,565.00
700 <u>Property</u>				
752 Capital Equipment – Original and Additional		10,000.00		10,000.00
Total Property		\$10,000.00		\$10,000.00
Total 1241 Learning Support – Public	\$595,713.00	\$736,054.00	\$313,562.00	\$1,645,329.00

LEA : 122097203 Morrisville Borough SD

Printed 1/27/2021 10:00:22 AM

General Fund (10)				
1243 Gifted Support				
	<u>Elementary</u>	<u>Secondary</u>	<u>Federal</u>	<u>Total</u>
100 <u>Personnel Services – Salaries</u>				
100 Personnel Services – Salaries	104,553.00	20,922.00		125,475.00
Total Personnel Services – Salaries	\$104,553.00	\$20,922.00		\$125,475.00
200 <u>Personnel Services – Employee Benefits</u>				
220 Social Security Contributions	8,467.00	(1,905.00)		6,562.00
230 PSERS Retirement Contributions	36,013.00	7,206.00		43,219.00
270 Group Insurance – Self-Insurance	20,009.00	5,102.00		25,111.00
Total Personnel Services – Employee Benefits	\$64,489.00	\$10,403.00		\$74,892.00
600 <u>Supplies</u>				
610 General Supplies	68.00			68.00
Total Supplies	\$68.00			\$68.00
Total 1243 Gifted Support	\$169,110.00	\$31,325.00		\$200,435.00

LEA : 122097203 Morrisville Borough SD

Printed 1/27/2021 10:00:22 AM

General Fund (10)

1270 Multi-Handicapped Support

	<u>Elementary</u>	<u>Secondary</u>	<u>Federal</u>	<u>Total</u>
300 <u>Purchased Professional and Technical Services</u>				
322 Professional Educational Services – lus		288,861.00		288,861.00
Total Purchased Professional and Technical Services		\$288,861.00		\$288,861.00
Total 1270 Multi-Handicapped Support		\$288,861.00		\$288,861.00

LEA : 122097203 Morrisville Borough SD

Printed 1/27/2021 10:00:22 AM

General Fund (10)				
1290 Special Programs - Other Support	<u>Elementary</u>	<u>Secondary</u>	<u>Federal</u>	<u>Total</u>
100 <u>Personnel Services – Salaries</u>				
100 Personnel Services – Salaries		117,930.00		117,930.00
Total Personnel Services – Salaries		\$117,930.00		\$117,930.00
200 <u>Personnel Services – Employee Benefits</u>				
220 Social Security Contributions		10,184.00		10,184.00
230 PSERS Retirement Contributions		40,621.00		40,621.00
270 Group Insurance – Self-Insurance		33,229.00		33,229.00
Total Personnel Services – Employee Benefits		\$84,034.00		\$84,034.00
300 <u>Purchased Professional and Technical Services</u>				
322 Professional Educational Services – Ius	71,150.00	127,969.00		199,119.00
340 Technical Services		37,942.00		37,942.00
Total Purchased Professional and Technical Services	\$71,150.00	\$165,911.00		\$237,061.00
500 <u>Other Purchased Services</u>				
567 Tuition To Approved Private Schools (APS) and PA Chartered Schools for the Deaf and Blind	83,875.00			83,875.00
568 Tuition To Private Residential Rehabilitative Institutions (PRRI) [In-State] and Detention Centers		77,835.00		77,835.00
Total Other Purchased Services	\$83,875.00	\$77,835.00		\$161,710.00
600 <u>Supplies</u>				
610 General Supplies		30,146.00		30,146.00
Total Supplies		\$30,146.00		\$30,146.00
Total 1290 Special Programs - Other Support	\$155,025.00	\$475,856.00		\$630,881.00

LEA : 122097203 Morrisville Borough SD

Printed 1/27/2021 10:00:22 AM

General Fund (10)				
1300 Vocational Education	<u>Elementary</u>	<u>Secondary</u>	<u>Federal</u>	<u>Total</u>
100 <u>Personnel Services – Salaries</u>				
100 Personnel Services – Salaries		37,608.00		37,608.00
Total Personnel Services – Salaries		\$37,608.00		\$37,608.00
200 <u>Personnel Services – Employee Benefits</u>				
220 Social Security Contributions		3,458.00		3,458.00
230 PSERS Retirement Contributions		12,954.00		12,954.00
260 Workers’ Compensation		1,885.00		1,885.00
270 Group Insurance – Self-Insurance		3,070.00		3,070.00
Total Personnel Services – Employee Benefits		\$21,367.00		\$21,367.00
500 <u>Other Purchased Services</u>				
564 Tuition To Career and Technology Centers		726,978.00		726,978.00
580 Travel		906.00		906.00
Total Other Purchased Services		\$727,884.00		\$727,884.00
600 <u>Supplies</u>				
610 General Supplies		204.00		204.00
Total Supplies		\$204.00		\$204.00
Total 1300 Vocational Education		\$787,063.00		\$787,063.00

LEA : 122097203 Morrisville Borough SD

Printed 1/27/2021 10:00:22 AM

General Fund (10)

1400 Other Instructional Programs – Elementary / Secondary	<u>Elementary</u>	<u>Secondary</u>	<u>Federal</u>	<u>Total</u>
500 <u>Other Purchased Services</u>				
569 Tuition – Other		375.00		375.00
Total Other Purchased Services		\$375.00		\$375.00
Total 1400 Other Instructional Programs – Elementary / Secondary		\$375.00		\$375.00

LEA : 122097203 Morrisville Borough SD

Printed 1/27/2021 10:00:22 AM

General Fund (10)

1490 Additional Other Instructional Programs	<u>Elementary</u>	<u>Secondary</u>	<u>Federal</u>	<u>Total</u>
500 <u>Other Purchased Services</u>				
569 Tuition – Other		375.00		375.00
Total Other Purchased Services		\$375.00		\$375.00
Total 1490 Additional Other Instructional Programs		\$375.00		\$375.00

LEA : 122097203 Morrisville Borough SD

Printed 1/27/2021 10:00:30 AM

General Fund (10)

2000 Support Services

	<u>Total</u>
100 <u>Personnel Services – Salaries</u>	
100 Personnel Services – Salaries	2,540,906.00
Total Personnel Services – Salaries	\$2,540,906.00
200 <u>Personnel Services – Employee Benefits</u>	
210 Group Insurance – Contracted Provider	9,159.00
220 Social Security Contributions	199,084.00
230 PSERS Retirement Contributions	809,975.00
260 Workers’ Compensation	18,898.00
270 Group Insurance – Self-Insurance	595,861.00
299 All Other Employee Benefits	6,890.00
Total Personnel Services – Employee Benefits	\$1,639,867.00
300 <u>Purchased Professional and Technical Services</u>	
310 Official / Administrative Services	20,948.00
322 Professional Educational Services – Ius	217.00
329 Professional Educational Services – Other	26,250.00
330 Other Professional Services	189,732.00
340 Technical Services	120,411.00
390 Other Purchased Professional and Technical Services	163,234.00
Total Purchased Professional and Technical Services	\$520,792.00
400 <u>Purchased Property Services</u>	
410 Cleaning Services	58,534.00
420 Utility Services	105,703.00
430 Repairs and Maintenance Services	152,115.00
440 Rentals	85,422.00
460 Extermination Services	1,695.00
Total Purchased Property Services	\$403,469.00
500 <u>Other Purchased Services</u>	
513 Contracted Carriers	85,520.00
516 Student Transportation Services From the IU	539,662.00
523 General Property and Liability Insurance	86,342.00
530 Communications	30,680.00
541 Advertising Related to Federal Grant Awards	1,006.00
580 Travel	1,102.00
595 IU Payments By Withholding	4,410.00
Total Other Purchased Services	\$748,722.00
600 <u>Supplies</u>	
610 General Supplies	76,479.00
620 Energy	57,572.00
640 Books and Periodicals	135,895.00
Total Supplies	\$269,946.00
700 <u>Property</u>	
752 Capital Equipment – Original and Additional	23,529.00
762 Capitalized Equipment - Replacement	38,605.00

LEA : 122097203 Morrisville Borough SD

Printed 1/27/2021 10:00:30 AM

General Fund (10)

2000 Support Services

	<u>Total</u>
Total Property	\$62,134.00
800 <u>Other Objects</u>	
810 Dues and Fees	94,114.00
Total Other Objects	\$94,114.00
Total 2000 Support Services	\$6,279,950.00

LEA : 122097203 Morrisville Borough SD

Printed 1/27/2021 10:00:30 AM

General Fund (10)

2100 Support Services – Students	Elementary	Secondary	Federal	Total
100 <u>Personnel Services – Salaries</u>				
100 Personnel Services – Salaries	203,639.00	244,586.00	178,404.00	678,067.00
Total Personnel Services – Salaries	\$203,639.00	\$244,586.00	\$178,404.00	\$678,067.00
200 <u>Personnel Services – Employee Benefits</u>				
210 Group Insurance – Contracted Provider	1,992.00	5,965.00		7,957.00
220 Social Security Contributions	16,708.00	20,997.00		41,989.00
230 PSERS Retirement Contributions	70,143.00	84,248.00		172,109.00
260 Workers' Compensation	2,538.00	1,666.00		5,056.00
270 Group Insurance – Self-Insurance	42,917.00	31,123.00	15,030.00	112,279.00
Total Personnel Services – Employee Benefits	\$134,298.00	\$143,999.00	\$15,030.00	\$339,390.00
300 <u>Purchased Professional and Technical Services</u>				
329 Professional Educational Services – Other			26,250.00	26,250.00
330 Other Professional Services		4,500.00		4,500.00
390 Other Purchased Professional and Technical Services		10,700.00		10,700.00
Total Purchased Professional and Technical Services		\$15,200.00	\$26,250.00	\$41,450.00
500 <u>Other Purchased Services</u>				
580 Travel	240.00	408.00		648.00
Total Other Purchased Services	\$240.00	\$408.00		\$648.00
600 <u>Supplies</u>				
610 General Supplies	1,329.00	689.00		2,018.00
640 Books and Periodicals		209.00		209.00
Total Supplies	\$1,329.00	\$898.00		\$2,227.00
700 <u>Property</u>				
752 Capital Equipment – Original and Additional		36.00		36.00
Total Property		\$36.00		\$36.00
Total 2100 Support Services – Students	\$339,506.00	\$405,127.00	\$219,684.00	\$1,061,818.00

LEA : 122097203 Morrisville Borough SD

Printed 1/27/2021 10:00:30 AM

General Fund (10)				
2110 Supervision of Student Services	<u>Elementary</u>	<u>Secondary</u>	<u>Federal</u>	<u>Total</u>
100 <u>Personnel Services – Salaries</u>				
100 Personnel Services – Salaries			178,404.00	178,404.00
Total Personnel Services – Salaries			\$178,404.00	\$178,404.00
200 <u>Personnel Services – Employee Benefits</u>				
270 Group Insurance – Self-Insurance			15,030.00	15,030.00
Total Personnel Services – Employee Benefits			\$15,030.00	\$15,030.00
300 <u>Purchased Professional and Technical Services</u>				
329 Professional Educational Services – Other			26,250.00	26,250.00
Total Purchased Professional and Technical Services			\$26,250.00	\$26,250.00
500 <u>Other Purchased Services</u>				
580 Travel	240.00	408.00		648.00
Total Other Purchased Services	\$240.00	\$408.00		\$648.00
600 <u>Supplies</u>				
610 General Supplies	929.00			929.00
Total Supplies	\$929.00			\$929.00
700 <u>Property</u>				
752 Capital Equipment – Original and Additional		36.00		36.00
Total Property		\$36.00		\$36.00
Total 2110 Supervision of Student Services	\$1,169.00	\$444.00	\$219,684.00	\$221,297.00

LEA : 122097203 Morrisville Borough SD

Printed 1/27/2021 10:00:30 AM

General Fund (10)				
2111 Supervision of Student Services – Head of Component	<u>Elementary</u>	<u>Secondary</u>	<u>Federal</u>	<u>Total</u>
100 <u>Personnel Services – Salaries</u>				
100 Personnel Services – Salaries			178,404.00	178,404.00
Total Personnel Services – Salaries			\$178,404.00	\$178,404.00
200 <u>Personnel Services – Employee Benefits</u>				
270 Group Insurance – Self-Insurance			15,030.00	15,030.00
Total Personnel Services – Employee Benefits			\$15,030.00	\$15,030.00
300 <u>Purchased Professional and Technical Services</u>				
329 Professional Educational Services – Other			26,250.00	26,250.00
Total Purchased Professional and Technical Services			\$26,250.00	\$26,250.00
500 <u>Other Purchased Services</u>				
580 Travel	240.00	408.00		648.00
Total Other Purchased Services	\$240.00	\$408.00		\$648.00
600 <u>Supplies</u>				
610 General Supplies	929.00			929.00
Total Supplies	\$929.00			\$929.00
700 <u>Property</u>				
752 Capital Equipment – Original and Additional		36.00		36.00
Total Property		\$36.00		\$36.00
Total 2111 Supervision of Student Services – Head of Component	\$1,169.00	\$444.00	\$219,684.00	\$221,297.00

LEA : 122097203 Morrisville Borough SD

Printed 1/27/2021 10:00:30 AM

General Fund (10)				
2120 Guidance Services	<u>Elementary</u>	<u>Secondary</u>	<u>Federal</u>	<u>Total</u>
100 <u>Personnel Services – Salaries</u>				
100 Personnel Services – Salaries	170,945.00	146,709.00		317,654.00
Total Personnel Services – Salaries	\$170,945.00	\$146,709.00		\$317,654.00
200 <u>Personnel Services – Employee Benefits</u>				
220 Social Security Contributions	14,009.00	12,903.00		26,912.00
230 PSERS Retirement Contributions	58,882.00	50,534.00		109,416.00
260 Workers’ Compensation	2,538.00	1,666.00		4,204.00
270 Group Insurance – Self-Insurance	39,623.00	21,260.00		60,883.00
Total Personnel Services – Employee Benefits	\$115,052.00	\$86,363.00		\$201,415.00
300 <u>Purchased Professional and Technical Services</u>				
390 Other Purchased Professional and Technical Services		10,700.00		10,700.00
Total Purchased Professional and Technical Services		\$10,700.00		\$10,700.00
600 <u>Supplies</u>				
610 General Supplies		379.00		379.00
640 Books and Periodicals		209.00		209.00
Total Supplies		\$588.00		\$588.00
Total 2120 Guidance Services	\$285,997.00	\$244,360.00		\$530,357.00

LEA : 122097203 Morrisville Borough SD

Printed 1/27/2021 10:00:30 AM

General Fund (10)				
2140 Psychological Services	<u>Elementary</u>	<u>Secondary</u>	<u>Federal</u>	<u>Total</u>
100 <u>Personnel Services – Salaries</u>				
100 Personnel Services – Salaries	32,694.00	97,877.00		130,571.00
Total Personnel Services – Salaries	\$32,694.00	\$97,877.00		\$130,571.00
200 <u>Personnel Services – Employee Benefits</u>				
210 Group Insurance – Contracted Provider	1,992.00	5,965.00		7,957.00
220 Social Security Contributions	2,699.00	8,094.00		10,793.00
230 PSERS Retirement Contributions	11,261.00	33,714.00		44,975.00
270 Group Insurance – Self-Insurance	3,294.00	9,863.00		13,157.00
Total Personnel Services – Employee Benefits	\$19,246.00	\$57,636.00		\$76,882.00
300 <u>Purchased Professional and Technical Services</u>				
330 Other Professional Services		4,500.00		4,500.00
Total Purchased Professional and Technical Services		\$4,500.00		\$4,500.00
600 <u>Supplies</u>				
610 General Supplies	400.00	310.00		710.00
Total Supplies	\$400.00	\$310.00		\$710.00
Total 2140 Psychological Services	\$52,340.00	\$160,323.00		\$212,663.00

LEA : 122097203 Morrisville Borough SD

Printed 1/27/2021 10:00:30 AM

General Fund (10)

2170 Student Accounting Services	<u>Elementary</u>	<u>Secondary</u>	<u>Federal</u>	<u>Total</u>
100 <u>Personnel Services – Salaries</u>				
100 Personnel Services – Salaries				51,438.00
Total Personnel Services – Salaries				\$51,438.00
200 <u>Personnel Services – Employee Benefits</u>				
220 Social Security Contributions				4,284.00
230 PSERS Retirement Contributions				17,718.00
260 Workers’ Compensation				852.00
270 Group Insurance – Self-Insurance				23,209.00
Total Personnel Services – Employee Benefits				\$46,063.00
Total 2170 Student Accounting Services				\$97,501.00

LEA : 122097203 Morrisville Borough SD

Printed 1/27/2021 10:00:30 AM

General Fund (10)				
2200 Support Services – Instructional Staff	<u>Elementary</u>	<u>Secondary</u>	<u>Federal</u>	<u>Total</u>
100 <u>Personnel Services – Salaries</u>				
100 Personnel Services – Salaries	48,793.00	101,696.00		150,489.00
Total Personnel Services – Salaries	\$48,793.00	\$101,696.00		\$150,489.00
200 <u>Personnel Services – Employee Benefits</u>				
220 Social Security Contributions	4,109.00	8,370.00		12,479.00
230 PSERS Retirement Contributions	16,807.00	35,029.00		51,836.00
270 Group Insurance – Self-Insurance	8,006.00	23,587.00		31,593.00
Total Personnel Services – Employee Benefits	\$28,922.00	\$66,986.00		\$95,908.00
300 <u>Purchased Professional and Technical Services</u>				
322 Professional Educational Services – Ius	217.00			217.00
330 Other Professional Services	18,891.00	18,891.00		37,782.00
Total Purchased Professional and Technical Services	\$19,108.00	\$18,891.00		\$37,999.00
500 <u>Other Purchased Services</u>				
580 Travel	51.00	52.00		103.00
Total Other Purchased Services	\$51.00	\$52.00		\$103.00
600 <u>Supplies</u>				
610 General Supplies	329.00	51.00		380.00
640 Books and Periodicals	1,575.00			1,575.00
Total Supplies	\$1,904.00	\$51.00		\$1,955.00
Total 2200 Support Services – Instructional Staff	\$98,778.00	\$187,676.00		\$286,454.00

LEA : 122097203 Morrisville Borough SD

Printed 1/27/2021 10:00:30 AM

General Fund (10)

2250 School Library Services	<u>Elementary</u>	<u>Secondary</u>	<u>Federal</u>	<u>Total</u>
100 <u>Personnel Services – Salaries</u>				
100 Personnel Services – Salaries		52,903.00		52,903.00
Total Personnel Services – Salaries		\$52,903.00		\$52,903.00
200 <u>Personnel Services – Employee Benefits</u>				
220 Social Security Contributions		4,261.00		4,261.00
230 PSERS Retirement Contributions		18,222.00		18,222.00
270 Group Insurance – Self-Insurance		15,582.00		15,582.00
Total Personnel Services – Employee Benefits		\$38,065.00		\$38,065.00
600 <u>Supplies</u>				
610 General Supplies	278.00			278.00
640 Books and Periodicals	1,575.00			1,575.00
Total Supplies	\$1,853.00			\$1,853.00
Total 2250 School Library Services	\$1,853.00	\$90,968.00		\$92,821.00

LEA : 122097203 Morrisville Borough SD

Printed 1/27/2021 10:00:30 AM

General Fund (10)				
2260 Instruction and Curriculum Development Services	<u>Elementary</u>	<u>Secondary</u>	<u>Federal</u>	<u>Total</u>
100 <u>Personnel Services – Salaries</u>				
100 Personnel Services – Salaries	48,793.00	48,793.00		97,586.00
Total Personnel Services – Salaries	\$48,793.00	\$48,793.00		\$97,586.00
200 <u>Personnel Services – Employee Benefits</u>				
220 Social Security Contributions	4,109.00	4,109.00		8,218.00
230 PSERS Retirement Contributions	16,807.00	16,807.00		33,614.00
270 Group Insurance – Self-Insurance	8,006.00	8,005.00		16,011.00
Total Personnel Services – Employee Benefits	\$28,922.00	\$28,921.00		\$57,843.00
500 <u>Other Purchased Services</u>				
580 Travel	51.00	52.00		103.00
Total Other Purchased Services	\$51.00	\$52.00		\$103.00
Total 2260 Instruction and Curriculum Development Services	\$77,766.00	\$77,766.00		\$155,532.00

LEA : 122097203 Morrisville Borough SD

Printed 1/27/2021 10:00:30 AM

General Fund (10)

2270 Instructional Staff Professional Development Services	Elementary	Secondary	Federal	Total
300 <u>Purchased Professional and Technical Services</u>				
322 Professional Educational Services – lus	217.00			217.00
330 Other Professional Services	18,891.00	18,891.00		37,782.00
Total Purchased Professional and Technical Services	\$19,108.00	\$18,891.00		\$37,999.00
600 <u>Supplies</u>				
610 General Supplies	51.00	51.00		102.00
Total Supplies	\$51.00	\$51.00		\$102.00
Total 2270 Instructional Staff Professional Development Services	\$19,159.00	\$18,942.00		\$38,101.00

LEA : 122097203 Morrisville Borough SD

Printed 1/27/2021 10:00:30 AM

General Fund (10)				
2300 Support Services – Administration	<u>Elementary</u>	<u>Secondary</u>	<u>Federal</u>	<u>Total</u>
100 <u>Personnel Services – Salaries</u>				
100 Personnel Services – Salaries	234,277.00	195,188.00		654,456.00
Total Personnel Services – Salaries	\$234,277.00	\$195,188.00		\$654,456.00
200 <u>Personnel Services – Employee Benefits</u>				
220 Social Security Contributions	20,089.00	16,328.00		55,071.00
230 PSERS Retirement Contributions	80,697.00	67,233.00		221,639.00
260 Workers’ Compensation	1,864.00	1,805.00		5,422.00
270 Group Insurance – Self-Insurance	37,996.00	65,541.00		164,853.00
Total Personnel Services – Employee Benefits	\$140,646.00	\$150,907.00		\$446,985.00
300 <u>Purchased Professional and Technical Services</u>				
330 Other Professional Services				22,000.00
340 Technical Services				113,015.00
Total Purchased Professional and Technical Services				\$135,015.00
400 <u>Purchased Property Services</u>				
440 Rentals				85.00
Total Purchased Property Services				\$85.00
500 <u>Other Purchased Services</u>				
530 Communications		274.00		828.00
541 Advertising Related to Federal Grant Awards				1,006.00
580 Travel				351.00
Total Other Purchased Services		\$274.00		\$2,185.00
600 <u>Supplies</u>				
610 General Supplies	45.00			1,500.00
640 Books and Periodicals				915.00
Total Supplies	\$45.00			\$2,415.00
700 <u>Property</u>				
752 Capital Equipment – Original and Additional				320.00
Total Property				\$320.00
800 <u>Other Objects</u>				
810 Dues and Fees	99.00	694.00		86,964.00
Total Other Objects	\$99.00	\$694.00		\$86,964.00
Total 2300 Support Services – Administration	\$375,067.00	\$347,063.00		\$1,328,425.00

LEA : 122097203 Morrisville Borough SD

Printed 1/27/2021 10:00:30 AM

General Fund (10)				
2310 Board Services				
	<u>Elementary</u>	<u>Secondary</u>	<u>Federal</u>	<u>Total</u>
100 <u>Personnel Services – Salaries</u>				
100 Personnel Services – Salaries				8,000.00
Total Personnel Services – Salaries				\$8,000.00
200 <u>Personnel Services – Employee Benefits</u>				
220 Social Security Contributions				678.00
230 PSERS Retirement Contributions				2,756.00
Total Personnel Services – Employee Benefits				\$3,434.00
300 <u>Purchased Professional and Technical Services</u>				
330 Other Professional Services				22,000.00
Total Purchased Professional and Technical Services				\$22,000.00
500 <u>Other Purchased Services</u>				
541 Advertising Related to Federal Grant Awards				1,006.00
Total Other Purchased Services				\$1,006.00
600 <u>Supplies</u>				
610 General Supplies				579.00
Total Supplies				\$579.00
800 <u>Other Objects</u>				
810 Dues and Fees				21,168.00
Total Other Objects				\$21,168.00
Total 2310 Board Services				\$56,187.00

LEA : 122097203 Morrisville Borough SD

Printed 1/27/2021 10:00:30 AM

General Fund (10)

2330 Tax Assessment and Collection Services	<u>Elementary</u>	<u>Secondary</u>	<u>Federal</u>	<u>Total</u>
100 <u>Personnel Services – Salaries</u>				
100 Personnel Services – Salaries				11,000.00
Total Personnel Services – Salaries				\$11,000.00
200 <u>Personnel Services – Employee Benefits</u>				
220 Social Security Contributions				941.00
Total Personnel Services – Employee Benefits				\$941.00
500 <u>Other Purchased Services</u>				
530 Communications				554.00
Total Other Purchased Services				\$554.00
Total 2330 Tax Assessment and Collection Services				\$12,495.00

LEA : 122097203 Morrisville Borough SD

Printed 1/27/2021 10:00:30 AM

General Fund (10)				
2350 Legal and Accounting Services	<u>Elementary</u>	<u>Secondary</u>	<u>Federal</u>	<u>Total</u>
300 <u>Purchased Professional and Technical Services</u>				
340 Technical Services				113,015.00
Total Purchased Professional and Technical Services				\$113,015.00
Total 2350 Legal and Accounting Services				\$113,015.00

LEA : 122097203 Morrisville Borough SD

Printed 1/27/2021 10:00:30 AM

General Fund (10)				
2360 Office of the Superintendent / Executive Director Services	<u>Elementary</u>	<u>Secondary</u>	<u>Federal</u>	<u>Total</u>
100 <u>Personnel Services – Salaries</u>				
100 Personnel Services – Salaries				205,991.00
Total Personnel Services – Salaries				\$205,991.00
200 <u>Personnel Services – Employee Benefits</u>				
220 Social Security Contributions				17,035.00
230 PSERS Retirement Contributions				70,953.00
260 Workers’ Compensation				1,753.00
270 Group Insurance – Self-Insurance				61,316.00
Total Personnel Services – Employee Benefits				\$151,057.00
400 <u>Purchased Property Services</u>				
440 Rentals				85.00
Total Purchased Property Services				\$85.00
500 <u>Other Purchased Services</u>				
530 Communications		274.00		274.00
580 Travel				351.00
Total Other Purchased Services		\$274.00		\$625.00
600 <u>Supplies</u>				
610 General Supplies				876.00
640 Books and Periodicals				915.00
Total Supplies				\$1,791.00
700 <u>Property</u>				
752 Capital Equipment – Original and Additional				320.00
Total Property				\$320.00
800 <u>Other Objects</u>				
810 Dues and Fees				2,303.00
Total Other Objects				\$2,303.00
Total 2360 Office of the Superintendent / Executive Director Services		\$274.00		\$362,172.00

LEA : 122097203 Morrisville Borough SD

Printed 1/27/2021 10:00:30 AM

General Fund (10)

2380 Office of the Principal Services	<u>Elementary</u>	<u>Secondary</u>	<u>Federal</u>	<u>Total</u>
100 <u>Personnel Services – Salaries</u>				
100 Personnel Services – Salaries	234,277.00	195,188.00		429,465.00
Total Personnel Services – Salaries	\$234,277.00	\$195,188.00		\$429,465.00
200 <u>Personnel Services – Employee Benefits</u>				
220 Social Security Contributions	20,089.00	16,328.00		36,417.00
230 PSERS Retirement Contributions	80,697.00	67,233.00		147,930.00
260 Workers’ Compensation	1,864.00	1,805.00		3,669.00
270 Group Insurance – Self-Insurance	37,996.00	65,541.00		103,537.00
Total Personnel Services – Employee Benefits	\$140,646.00	\$150,907.00		\$291,553.00
600 <u>Supplies</u>				
610 General Supplies	45.00			45.00
Total Supplies	\$45.00			\$45.00
800 <u>Other Objects</u>				
810 Dues and Fees	99.00	694.00		793.00
Total Other Objects	\$99.00	\$694.00		\$793.00
Total 2380 Office of the Principal Services	\$375,067.00	\$346,789.00		\$721,856.00

LEA : 122097203 Morrisville Borough SD

Printed 1/27/2021 10:00:30 AM

General Fund (10)				
2390 Other Administration Services	<u>Elementary</u>	<u>Secondary</u>	<u>Federal</u>	<u>Total</u>
800 <u>Other Objects</u>				
810 Dues and Fees				62,700.00
Total Other Objects				\$62,700.00
Total 2390 Other Administration Services				\$62,700.00

LEA : 122097203 Morrisville Borough SD

Printed 1/27/2021 10:00:30 AM

General Fund (10)				
2400 Support Services – Pupil Health	<u>Elementary</u>	<u>Secondary</u>	<u>Federal</u>	<u>Total</u>
100 <u>Personnel Services – Salaries</u>				
100 Personnel Services – Salaries				133,969.00
Total Personnel Services – Salaries				\$133,969.00
200 <u>Personnel Services – Employee Benefits</u>				
220 Social Security Contributions				11,506.00
230 PSERS Retirement Contributions				46,145.00
260 Workers’ Compensation				1,469.00
270 Group Insurance – Self-Insurance				13,156.00
Total Personnel Services – Employee Benefits				\$72,276.00
300 <u>Purchased Professional and Technical Services</u>				
330 Other Professional Services				125,114.00
340 Technical Services				2,340.00
Total Purchased Professional and Technical Services				\$127,454.00
600 <u>Supplies</u>				
610 General Supplies				1,681.00
Total Supplies				\$1,681.00
800 <u>Other Objects</u>				
810 Dues and Fees				99.00
Total Other Objects				\$99.00
Total 2400 Support Services – Pupil Health				\$335,479.00

Page 78

LEA : 122097203 Morrisville Borough SD

Printed 1/27/2021 10:00:30 AM

General Fund (10)

2430 Dental Services

	<u>Elementary</u>	<u>Secondary</u>	<u>Federal</u>	<u>Total</u>
300 <u>Purchased Professional and Technical Services</u>				
340 Technical Services				2,000.00
Total Purchased Professional and Technical Services				\$2,000.00
Total 2430 Dental Services				\$2,000.00

LEA : 122097203 Morrisville Borough SD

Printed 1/27/2021 10:00:30 AM

General Fund (10)				
2440 Nursing Services	<u>Elementary</u>	<u>Secondary</u>	<u>Federal</u>	<u>Total</u>
100 <u>Personnel Services – Salaries</u>				
100 Personnel Services – Salaries				133,969.00
Total Personnel Services – Salaries				\$133,969.00
200 <u>Personnel Services – Employee Benefits</u>				
220 Social Security Contributions				11,506.00
230 PSERS Retirement Contributions				46,145.00
260 Workers’ Compensation				1,469.00
270 Group Insurance – Self-Insurance				13,156.00
Total Personnel Services – Employee Benefits				\$72,276.00
600 <u>Supplies</u>				
610 General Supplies				1,681.00
Total Supplies				\$1,681.00
800 <u>Other Objects</u>				
810 Dues and Fees				99.00
Total Other Objects				\$99.00
Total 2440 Nursing Services				\$208,025.00

LEA : 122097203 Morrisville Borough SD

Printed 1/27/2021 10:00:30 AM

General Fund (10)				
2500 Support Services – Business	<u>Elementary</u>	<u>Secondary</u>	<u>Federal</u>	<u>Total</u>
100 <u>Personnel Services – Salaries</u>				
100 Personnel Services – Salaries				258,427.00
Total Personnel Services – Salaries				\$258,427.00
200 <u>Personnel Services – Employee Benefits</u>				
210 Group Insurance – Contracted Provider				1,202.00
220 Social Security Contributions				21,849.00
230 PSERS Retirement Contributions				89,015.00
260 Workers' Compensation				2,379.00
270 Group Insurance – Self-Insurance				40,484.00
299 All Other Employee Benefits				1,627.00
Total Personnel Services – Employee Benefits				\$156,556.00
300 <u>Purchased Professional and Technical Services</u>				
310 Official / Administrative Services				20,948.00
340 Technical Services				30.00
Total Purchased Professional and Technical Services				\$20,978.00
400 <u>Purchased Property Services</u>				
440 Rentals				31,257.00
Total Purchased Property Services				\$31,257.00
600 <u>Supplies</u>				
610 General Supplies				3,206.00
Total Supplies				\$3,206.00
700 <u>Property</u>				
762 Capitalized Equipment - Replacement				3,269.00
Total Property				\$3,269.00
800 <u>Other Objects</u>				
810 Dues and Fees				6,415.00
Total Other Objects				\$6,415.00
Total 2500 Support Services – Business				\$480,108.00

LEA : 122097203 Morrisville Borough SD

Printed 1/27/2021 10:00:30 AM

General Fund (10)				
2510 Fiscal Services	<u>Elementary</u>	<u>Secondary</u>	<u>Federal</u>	<u>Total</u>
100 <u>Personnel Services – Salaries</u>				
100 Personnel Services – Salaries				258,427.00
Total Personnel Services – Salaries				\$258,427.00
200 <u>Personnel Services – Employee Benefits</u>				
210 Group Insurance – Contracted Provider				1,202.00
220 Social Security Contributions				21,849.00
230 PSERS Retirement Contributions				89,015.00
260 Workers' Compensation				2,379.00
270 Group Insurance – Self-Insurance				40,484.00
299 All Other Employee Benefits				1,627.00
Total Personnel Services – Employee Benefits				\$156,556.00
300 <u>Purchased Professional and Technical Services</u>				
310 Official / Administrative Services				20,948.00
340 Technical Services				30.00
Total Purchased Professional and Technical Services				\$20,978.00
400 <u>Purchased Property Services</u>				
440 Rentals				31,257.00
Total Purchased Property Services				\$31,257.00
600 <u>Supplies</u>				
610 General Supplies				3,206.00
Total Supplies				\$3,206.00
700 <u>Property</u>				
762 Capitalized Equipment - Replacement				3,269.00
Total Property				\$3,269.00
800 <u>Other Objects</u>				
810 Dues and Fees				6,415.00
Total Other Objects				\$6,415.00
Total 2510 Fiscal Services				\$480,108.00

LEA : 122097203 Morrisville Borough SD

Printed 1/27/2021 10:00:30 AM

General Fund (10)				
2511 Supervision of Fiscal Services - Head of Component	<u>Elementary</u>	<u>Secondary</u>	<u>Federal</u>	<u>Total</u>
100 <u>Personnel Services – Salaries</u>				
100 Personnel Services – Salaries				122,400.00
Total Personnel Services – Salaries				\$122,400.00
200 <u>Personnel Services – Employee Benefits</u>				
220 Social Security Contributions				10,472.00
230 PSERS Retirement Contributions				42,161.00
260 Workers’ Compensation				1,448.00
Total Personnel Services – Employee Benefits				\$54,081.00
300 <u>Purchased Professional and Technical Services</u>				
310 Official / Administrative Services				20,948.00
340 Technical Services				30.00
Total Purchased Professional and Technical Services				\$20,978.00
400 <u>Purchased Property Services</u>				
440 Rentals				31,257.00
Total Purchased Property Services				\$31,257.00
600 <u>Supplies</u>				
610 General Supplies				3,206.00
Total Supplies				\$3,206.00
700 <u>Property</u>				
762 Capitalized Equipment - Replacement				3,269.00
Total Property				\$3,269.00
800 <u>Other Objects</u>				
810 Dues and Fees				6,415.00
Total Other Objects				\$6,415.00
Total 2511 Supervision of Fiscal Services - Head of Component				\$241,606.00

LEA : 122097203 Morrisville Borough SD

Printed 1/27/2021 10:00:30 AM

General Fund (10)

2513 Receiving and Disbursing Funds Services	<u>Elementary</u>	<u>Secondary</u>	<u>Federal</u>	<u>Total</u>
100 <u>Personnel Services – Salaries</u>				
100 Personnel Services – Salaries				53,661.00
Total Personnel Services – Salaries				\$53,661.00
200 <u>Personnel Services – Employee Benefits</u>				
220 Social Security Contributions				4,530.00
230 PSERS Retirement Contributions				18,483.00
270 Group Insurance – Self-Insurance				10,291.00
Total Personnel Services – Employee Benefits				\$33,304.00
Total 2513 Receiving and Disbursing Funds Services				\$86,965.00

LEA : 122097203 Morrisville Borough SD

Printed 1/27/2021 10:00:30 AM

General Fund (10)

2514 Payroll Services

	<u>Elementary</u>	<u>Secondary</u>	<u>Federal</u>	<u>Total</u>
100 <u>Personnel Services – Salaries</u>				
100 Personnel Services – Salaries				58,366.00
Total Personnel Services – Salaries				\$58,366.00
200 <u>Personnel Services – Employee Benefits</u>				
220 Social Security Contributions				4,794.00
230 PSERS Retirement Contributions				20,104.00
270 Group Insurance – Self-Insurance				30,193.00
299 All Other Employee Benefits				1,627.00
Total Personnel Services – Employee Benefits				\$56,718.00
Total 2514 Payroll Services				\$115,084.00

LEA : 122097203 Morrisville Borough SD

Printed 1/27/2021 10:00:30 AM

General Fund (10)

2519 Other Fiscal Services

	<u>Elementary</u>	<u>Secondary</u>	<u>Federal</u>	<u>Total</u>
100 <u>Personnel Services – Salaries</u>				
100 Personnel Services – Salaries				24,000.00
Total Personnel Services – Salaries				\$24,000.00
200 <u>Personnel Services – Employee Benefits</u>				
210 Group Insurance – Contracted Provider				1,202.00
220 Social Security Contributions				2,053.00
230 PSERS Retirement Contributions				8,267.00
260 Workers' Compensation				931.00
Total Personnel Services – Employee Benefits				\$12,453.00
Total 2519 Other Fiscal Services				\$36,453.00

LEA : 122097203 Morrisville Borough SD

Printed 1/27/2021 10:00:30 AM

General Fund (10)				
2600 Operation and Maintenance of Plant Services	<u>Elementary</u>	<u>Secondary</u>	<u>Federal</u>	<u>Total</u>
100 <u>Personnel Services – Salaries</u>				
100 Personnel Services – Salaries				446,840.00
Total Personnel Services – Salaries				\$446,840.00
200 <u>Personnel Services – Employee Benefits</u>				
220 Social Security Contributions				38,759.00
230 PSERS Retirement Contributions				153,915.00
260 Workers’ Compensation				3,886.00
270 Group Insurance – Self-Insurance				129,657.00
Total Personnel Services – Employee Benefits				\$326,217.00
300 <u>Purchased Professional and Technical Services</u>				
390 Other Purchased Professional and Technical Services				152,534.00
Total Purchased Professional and Technical Services				\$152,534.00
400 <u>Purchased Property Services</u>				
410 Cleaning Services				58,534.00
420 Utility Services				105,703.00
430 Repairs and Maintenance Services				152,115.00
440 Rentals				54,080.00
460 Extermination Services				1,695.00
Total Purchased Property Services				\$372,127.00
500 <u>Other Purchased Services</u>				
523 General Property and Liability Insurance				86,342.00
530 Communications				29,852.00
Total Other Purchased Services				\$116,194.00
600 <u>Supplies</u>				
610 General Supplies	33,722.00	33,722.00		67,444.00
620 Energy				52,449.00
Total Supplies	\$33,722.00	\$33,722.00		\$119,893.00
700 <u>Property</u>				
752 Capital Equipment – Original and Additional				5,950.00
762 Capitalized Equipment - Replacement				196.00
Total Property				\$6,146.00
800 <u>Other Objects</u>				
810 Dues and Fees				597.00
Total Other Objects				\$597.00
Total 2600 Operation and Maintenance of Plant Services	\$33,722.00	\$33,722.00		\$1,540,548.00

LEA : 122097203 Morrisville Borough SD

Printed 1/27/2021 10:00:30 AM

General Fund (10)

2610 Supervision of Operation and Maintenance of Plant Services	<u>Elementary</u>	<u>Secondary</u>	<u>Federal</u>	<u>Total</u>
100 <u>Personnel Services – Salaries</u>				
100 Personnel Services – Salaries				69,434.00
Total Personnel Services – Salaries				\$69,434.00
200 <u>Personnel Services – Employee Benefits</u>				
220 Social Security Contributions				5,941.00
230 PSERS Retirement Contributions				23,917.00
Total Personnel Services – Employee Benefits				\$29,858.00
Total 2610 Supervision of Operation and Maintenance of Plant Services				\$99,292.00

LEA : 122097203 Morrisville Borough SD

Printed 1/27/2021 10:00:30 AM

General Fund (10)

2611 Supervision of Operation and Maintenance of Plant Services – Head of Component	<u>Elementary</u>	<u>Secondary</u>	<u>Federal</u>	<u>Total</u>
100 <u>Personnel Services – Salaries</u>				
100 Personnel Services – Salaries				69,434.00
Total Personnel Services – Salaries				\$69,434.00
200 <u>Personnel Services – Employee Benefits</u>				
220 Social Security Contributions				5,941.00
230 PSERS Retirement Contributions				23,917.00
Total Personnel Services – Employee Benefits				\$29,858.00
Total 2611 Supervision of Operation and Maintenance of Plant Services – Head of Component				\$99,292.00

LEA : 122097203 Morrisville Borough SD

Printed 1/27/2021 10:00:30 AM

General Fund (10)				
2620 Operation of Buildings Services	<u>Elementary</u>	<u>Secondary</u>	<u>Federal</u>	<u>Total</u>
100 <u>Personnel Services – Salaries</u>				
100 Personnel Services – Salaries				377,406.00
Total Personnel Services – Salaries				\$377,406.00
200 <u>Personnel Services – Employee Benefits</u>				
220 Social Security Contributions				32,818.00
230 PSERS Retirement Contributions				129,998.00
260 Workers’ Compensation				3,886.00
270 Group Insurance – Self-Insurance				129,657.00
Total Personnel Services – Employee Benefits				\$296,359.00
400 <u>Purchased Property Services</u>				
410 Cleaning Services				58,534.00
420 Utility Services				105,703.00
430 Repairs and Maintenance Services				152,115.00
440 Rentals				54,080.00
460 Extermination Services				1,695.00
Total Purchased Property Services				\$372,127.00
500 <u>Other Purchased Services</u>				
523 General Property and Liability Insurance				86,342.00
530 Communications				29,852.00
Total Other Purchased Services				\$116,194.00
600 <u>Supplies</u>				
610 General Supplies	33,722.00	33,722.00		67,444.00
620 Energy				52,449.00
Total Supplies	\$33,722.00	\$33,722.00		\$119,893.00
700 <u>Property</u>				
752 Capital Equipment – Original and Additional				5,950.00
762 Capitalized Equipment - Replacement				196.00
Total Property				\$6,146.00
800 <u>Other Objects</u>				
810 Dues and Fees				597.00
Total Other Objects				\$597.00
Total 2620 Operation of Buildings Services	\$33,722.00	\$33,722.00		\$1,288,722.00

LEA : 122097203 Morrisville Borough SD

Printed 1/27/2021 10:00:30 AM

General Fund (10)

2660 Safety and Security Services

<u>Elementary</u>	<u>Secondary</u>	<u>Federal</u>	<u>Total</u>
-------------------	------------------	----------------	--------------

300 Purchased Professional and Technical Services

390 Other Purchased Professional and Technical Services			152,534.00
---------------------------------------------------------	--	--	------------

Total Purchased Professional and Technical Services			\$152,534.00
------------------------------------------------------------	--	--	---------------------

Total 2660 Safety and Security Services			\$152,534.00
------------------------------------------------	--	--	---------------------

LEA : 122097203 Morrisville Borough SD

Printed 1/27/2021 10:00:30 AM

General Fund (10)				
2700 Student Transportation Services	<u>Elementary</u>	<u>Secondary</u>	<u>Federal</u>	<u>Total</u>
100 <u>Personnel Services – Salaries</u>				
100 Personnel Services – Salaries				43,148.00
Total Personnel Services – Salaries				\$43,148.00
200 <u>Personnel Services – Employee Benefits</u>				
220 Social Security Contributions				4,035.00
230 PSERS Retirement Contributions				14,862.00
260 Workers’ Compensation				686.00
270 Group Insurance – Self-Insurance				12,715.00
Total Personnel Services – Employee Benefits				\$32,298.00
300 <u>Purchased Professional and Technical Services</u>				
330 Other Professional Services				336.00
Total Purchased Professional and Technical Services				\$336.00
500 <u>Other Purchased Services</u>				
513 Contracted Carriers				85,520.00
516 Student Transportation Services From the IU				539,662.00
Total Other Purchased Services				\$625,182.00
600 <u>Supplies</u>				
620 Energy				5,123.00
Total Supplies				\$5,123.00
700 <u>Property</u>				
752 Capital Equipment – Original and Additional				541.00
Total Property				\$541.00
Total 2700 Student Transportation Services				\$706,628.00

LEA : 122097203 Morrisville Borough SD

Printed 1/27/2021 10:00:30 AM

General Fund (10)				
2720 Vehicle Operation Services	<u>Elementary</u>	<u>Secondary</u>	<u>Federal</u>	<u>Total</u>
100 <u>Personnel Services – Salaries</u>				
100 Personnel Services – Salaries				43,148.00
Total Personnel Services – Salaries				\$43,148.00
200 <u>Personnel Services – Employee Benefits</u>				
220 Social Security Contributions				4,035.00
230 PSERS Retirement Contributions				14,862.00
260 Workers’ Compensation				686.00
270 Group Insurance – Self-Insurance				12,715.00
Total Personnel Services – Employee Benefits				\$32,298.00
300 <u>Purchased Professional and Technical Services</u>				
330 Other Professional Services				336.00
Total Purchased Professional and Technical Services				\$336.00
500 <u>Other Purchased Services</u>				
513 Contracted Carriers				85,520.00
516 Student Transportation Services From the IU				539,662.00
Total Other Purchased Services				\$625,182.00
600 <u>Supplies</u>				
620 Energy				5,123.00
Total Supplies				\$5,123.00
700 <u>Property</u>				
752 Capital Equipment – Original and Additional				541.00
Total Property				\$541.00
Total 2720 Vehicle Operation Services				\$706,628.00

LEA : 122097203 Morrisville Borough SD

Printed 1/27/2021 10:00:30 AM

General Fund (10)					
2800 Support Services – Central		<u>Elementary</u>	<u>Secondary</u>	<u>Federal</u>	<u>Total</u>
100 <u>Personnel Services – Salaries</u>					
100 Personnel Services – Salaries					175,510.00
Total Personnel Services – Salaries					\$175,510.00
200 <u>Personnel Services – Employee Benefits</u>					
220 Social Security Contributions					13,396.00
230 PSERS Retirement Contributions					60,454.00
270 Group Insurance – Self-Insurance					91,124.00
299 All Other Employee Benefits					5,263.00
Total Personnel Services – Employee Benefits					\$170,237.00
300 <u>Purchased Professional and Technical Services</u>					
340 Technical Services					5,026.00
Total Purchased Professional and Technical Services					\$5,026.00
600 <u>Supplies</u>					
610 General Supplies					250.00
640 Books and Periodicals					133,196.00
Total Supplies					\$133,446.00
700 <u>Property</u>					
752 Capital Equipment – Original and Additional					16,682.00
Total Property					\$16,682.00
800 <u>Other Objects</u>					
810 Dues and Fees					39.00
Total Other Objects					\$39.00
Total 2800 Support Services – Central					\$500,940.00

LEA : 122097203 Morrisville Borough SD

Printed 1/27/2021 10:00:30 AM

General Fund (10)				
2810 Planning, Research, Development and Evaluation Services	<u>Elementary</u>	<u>Secondary</u>	<u>Federal</u>	<u>Total</u>
100 <u>Personnel Services – Salaries</u>				
100 Personnel Services – Salaries				121,409.00
Total Personnel Services – Salaries				\$121,409.00
200 <u>Personnel Services – Employee Benefits</u>				
220 Social Security Contributions				8,970.00
230 PSERS Retirement Contributions				41,819.00
270 Group Insurance – Self-Insurance				60,932.00
Total Personnel Services – Employee Benefits				\$111,721.00
300 <u>Purchased Professional and Technical Services</u>				
340 Technical Services				5,026.00
Total Purchased Professional and Technical Services				\$5,026.00
600 <u>Supplies</u>				
610 General Supplies				250.00
640 Books and Periodicals				133,196.00
Total Supplies				\$133,446.00
700 <u>Property</u>				
752 Capital Equipment – Original and Additional				16,682.00
Total Property				\$16,682.00
800 <u>Other Objects</u>				
810 Dues and Fees				39.00
Total Other Objects				\$39.00
Total 2810 Planning, Research, Development and Evaluation Services				\$388,323.00

LEA : 122097203 Morrisville Borough SD

Printed 1/27/2021 10:00:30 AM

General Fund (10)

2830 Staff Services

	<u>Elementary</u>	<u>Secondary</u>	<u>Federal</u>	<u>Total</u>
100 <u>Personnel Services – Salaries</u>				
100 Personnel Services – Salaries				54,101.00
Total Personnel Services – Salaries				\$54,101.00
200 <u>Personnel Services – Employee Benefits</u>				
220 Social Security Contributions				4,426.00
230 PSERS Retirement Contributions				18,635.00
270 Group Insurance – Self-Insurance				30,192.00
299 All Other Employee Benefits				5,263.00
Total Personnel Services – Employee Benefits				\$58,516.00
Total 2830 Staff Services				\$112,617.00

LEA : 122097203 Morrisville Borough SD

Printed 1/27/2021 10:00:30 AM

General Fund (10)

2833 Staff Accounting Services	<u>Elementary</u>	<u>Secondary</u>	<u>Federal</u>	<u>Total</u>
100 <u>Personnel Services – Salaries</u>				
100 Personnel Services – Salaries				54,101.00
Total Personnel Services – Salaries				\$54,101.00
200 <u>Personnel Services – Employee Benefits</u>				
220 Social Security Contributions				4,426.00
230 PSERS Retirement Contributions				18,635.00
270 Group Insurance – Self-Insurance				30,192.00
299 All Other Employee Benefits				5,263.00
Total Personnel Services – Employee Benefits				\$58,516.00
Total 2833 Staff Accounting Services				\$112,617.00

LEA : 122097203 Morrisville Borough SD

Printed 1/27/2021 10:00:30 AM

General Fund (10)				
2900 Other Support Services	<u>Elementary</u>	<u>Secondary</u>	<u>Federal</u>	<u>Total</u>
500 <u>Other Purchased Services</u>				
595 IU Payments By Withholding				4,410.00
Total Other Purchased Services				\$4,410.00
700 <u>Property</u>				
762 Capitalized Equipment - Replacement			35,140.00	35,140.00
Total Property			\$35,140.00	\$35,140.00
Total 2900 Other Support Services			\$35,140.00	\$39,550.00

LEA : 122097203 Morrisville Borough SD

Printed 1/27/2021 10:00:30 AM

General Fund (10)

2910 Support Services Not Listed Elsewhere In the 2000 Series

Elementary Secondary Federal Total

500 <u>Other Purchased Services</u>				
595 IU Payments By Withholding				4,410.00
Total Other Purchased Services				\$4,410.00
700 <u>Property</u>				
762 Capitalized Equipment - Replacement			35,140.00	35,140.00
Total Property			\$35,140.00	\$35,140.00
Total 2910 Support Services Not Listed Elsewhere In the 2000 Series			\$35,140.00	\$39,550.00

LEA : 122097203 Morrisville Borough SD

Printed 1/27/2021 10:00:36 AM

General Fund (10)

3000 Operation of Non-Instructional Services		<u>Total</u>
100 <u>Personnel Services – Salaries</u>		
100 Personnel Services – Salaries	118,578.00	
Total Personnel Services – Salaries	\$118,578.00	
200 <u>Personnel Services – Employee Benefits</u>		
220 Social Security Contributions	10,208.00	
230 PSERS Retirement Contributions	40,848.00	
Total Personnel Services – Employee Benefits	\$51,056.00	
300 <u>Purchased Professional and Technical Services</u>		
310 Official / Administrative Services	60,930.00	
329 Professional Educational Services – Other	150.00	
390 Other Purchased Professional and Technical Services	71,989.00	
Total Purchased Professional and Technical Services	\$133,069.00	
400 <u>Purchased Property Services</u>		
430 Repairs and Maintenance Services	16,286.00	
Total Purchased Property Services	\$16,286.00	
500 <u>Other Purchased Services</u>		
510 Student Transportation Services	47,488.00	
520 Insurance – General	6,674.00	
580 Travel	3,098.00	
Total Other Purchased Services	\$57,260.00	
600 <u>Supplies</u>		
610 General Supplies	39,053.00	
Total Supplies	\$39,053.00	
800 <u>Other Objects</u>		
810 Dues and Fees	9,382.00	
Total Other Objects	\$9,382.00	
Total 3000 Operation of Non-Instructional Services	\$424,684.00	

LEA : 122097203 Morrisville Borough SD

Printed 1/27/2021 10:00:36 AM

General Fund (10)				
3200 Student Activities	<u>Elementary</u>	<u>Secondary</u>	<u>Federal</u>	<u>Total</u>
100 <u>Personnel Services – Salaries</u>				
100 Personnel Services – Salaries				118,578.00
Total Personnel Services – Salaries				\$118,578.00
200 <u>Personnel Services – Employee Benefits</u>				
220 Social Security Contributions				10,208.00
230 PSERS Retirement Contributions				40,848.00
Total Personnel Services – Employee Benefits				\$51,056.00
300 <u>Purchased Professional and Technical Services</u>				
310 Official / Administrative Services				60,930.00
Total Purchased Professional and Technical Services				\$60,930.00
400 <u>Purchased Property Services</u>				
430 Repairs and Maintenance Services				16,286.00
Total Purchased Property Services				\$16,286.00
500 <u>Other Purchased Services</u>				
510 Student Transportation Services				47,488.00
520 Insurance – General				6,674.00
580 Travel				3,098.00
Total Other Purchased Services				\$57,260.00
600 <u>Supplies</u>				
610 General Supplies				39,053.00
Total Supplies				\$39,053.00
800 <u>Other Objects</u>				
810 Dues and Fees				9,382.00
Total Other Objects				\$9,382.00
Total 3200 Student Activities				\$352,545.00

LEA : 122097203 Morrisville Borough SD

Printed 1/27/2021 10:00:36 AM

General Fund (10)

3300 Community Services

	<u>Elementary</u>	<u>Secondary</u>	<u>Federal</u>	<u>Total</u>
300 <u>Purchased Professional and Technical Services</u>				
329 Professional Educational Services – Other			150.00	150.00
390 Other Purchased Professional and Technical Services				71,989.00
Total Purchased Professional and Technical Services			\$150.00	\$72,139.00
Total 3300 Community Services			\$150.00	\$72,139.00

LEA : 122097203 Morrisville Borough SD

Printed 1/27/2021 10:00:41 AM

General Fund (10)

4000 Facilities Acquisition, Construction and Improvement Services

Total

700 Property

710 Land and Improvements

13,629.00

Total Property	\$13,629.00
Total 4000 Facilities Acquisition, Construction and Improvement Services	\$13,629.00

LEA : 122097203 Morrisville Borough SD

Printed 1/27/2021 10:00:41 AM

General Fund (10)

4200 Existing Site Improvement Services	<u>Elementary</u>	<u>Secondary</u>	<u>Federal</u>	<u>Total</u>
700 <u>Property</u>				
710 Land and Improvements				13,629.00
Total Property				\$13,629.00
Total 4200 Existing Site Improvement Services				\$13,629.00

General Fund (10)

5000 Other Expenditures and Financing Uses		<u>Total</u>
800 <u>Other Objects</u>		
830 Interest		318,767.00
Total Other Objects		\$318,767.00
900 <u>Other Uses of Funds</u>		
910 Redemption of Principal		1,051,300.00
Total Other Uses of Funds		\$1,051,300.00
Total 5000 Other Expenditures and Financing Uses		\$1,370,067.00

LEA : 122097203 Morrisville Borough SD

Printed 1/27/2021 10:00:45 AM

General Fund (10)

5100 Debt Service / Other Expenditures and Financing Uses	<u>Elementary</u>	<u>Secondary</u>	<u>Federal</u>	<u>Total</u>
800 <u>Other Objects</u>				
830 Interest				318,767.00
Total Other Objects				\$318,767.00
900 <u>Other Uses of Funds</u>				
910 Redemption of Principal				1,051,300.00
Total Other Uses of Funds				\$1,051,300.00
Total 5100 Debt Service / Other Expenditures and Financing Uses				\$1,370,067.00

LEA : 122097203 Morrisville Borough SD

Printed 1/27/2021 10:00:45 AM

General Fund (10)				
5110 Debt Service	<u>Elementary</u>	<u>Secondary</u>	<u>Federal</u>	<u>Total</u>
800 <u>Other Objects</u>				
830 Interest				318,767.00
Total Other Objects				\$318,767.00
900 <u>Other Uses of Funds</u>				
910 Redemption of Principal				314,000.00
Total Other Uses of Funds				\$314,000.00
Total 5110 Debt Service				\$632,767.00

LEA : 122097203 Morrisville Borough SD

Printed 1/27/2021 10:00:45 AM

General Fund (10)

5120 Debt Service – Refunded Bonds	<u>Elementary</u>	<u>Secondary</u>	<u>Federal</u>	<u>Total</u>
900 <u>Other Uses of Funds</u>				
910 Redemption of Principal				737,300.00
Total Other Uses of Funds				\$737,300.00
Total 5120 Debt Service – Refunded Bonds				\$737,300.00

LEA : 122097203 Morrisville Borough SD

Printed 1/27/2021 10:00:33 AM

Other Capital Projects Fund (39)

2000 Support Services

Total

700 Property

752 Capital Equipment – Original and Additional

33,975.00

Total Property	\$33,975.00
Total 2000 Support Services	\$33,975.00

LEA : 122097203 Morrisville Borough SD

Printed 1/27/2021 10:00:33 AM

Other Capital Projects Fund (39)

2600 Operation and Maintenance of Plant Services	<u>Elementary</u>	<u>Secondary</u>	<u>Federal</u>	<u>Total</u>
700 <u>Property</u>				
752 Capital Equipment – Original and Additional				33,975.00
Total Property				\$33,975.00
Total 2600 Operation and Maintenance of Plant Services				\$33,975.00

LEA : 122097203 Morrisville Borough SD

Printed 1/27/2021 10:00:33 AM

Other Capital Projects Fund (39)

2650 Vehicle Operation and Maintenance Services (Other Than Student Transportation Vehicles)	<u>Elementary</u>	<u>Secondary</u>	<u>Federal</u>	<u>Total</u>
700 <u>Property</u>				
752 Capital Equipment – Original and Additional				33,975.00
Total Property				\$33,975.00
Total 2650 Vehicle Operation and Maintenance Services (Other Than Student Transportation Vehicles)				\$33,975.00

LEA : 122097203 Morrisville Borough SD

Printed 1/27/2021 10:00:43 AM

Other Capital Projects Fund (39)

4000 Facilities Acquisition, Construction and Improvement Services

Total

300 Purchased Professional and Technical Services

330 Other Professional Services	3,415,156.00
---------------------------------	--------------

Total Purchased Professional and Technical Services	\$3,415,156.00
-----------------------------------------------------	----------------

Total 4000 Facilities Acquisition, Construction and Improvement Services	\$3,415,156.00
--------------------------------------------------------------------------	----------------

LEA : 122097203 Morrisville Borough SD

Printed 1/27/2021 10:00:43 AM

Other Capital Projects Fund (39)

4200 Existing Site Improvement Services

<u>Elementary</u>	<u>Secondary</u>	<u>Federal</u>	<u>Total</u>
-------------------	------------------	----------------	--------------

300 Purchased Professional and Technical Services

330 Other Professional Services			3,415,156.00
---------------------------------	--	--	--------------

Total Purchased Professional and Technical Services			\$3,415,156.00
------------------------------------------------------------	--	--	-----------------------

Total 4200 Existing Site Improvement Services			\$3,415,156.00
------------------------------------------------------	--	--	-----------------------

LEA : 122097203 Morrisville Borough SD

Printed 1/27/2021 10:01:00 AM

	<u>General Fund(10)</u>	<u>Student Sponsored Activity Fund(21)</u>	<u>Public Purpose Trust(27)</u>	<u>Other Compt Approved (28)</u>	<u>Athletic / Activity(29)</u>
1000 <u>Instruction</u>					
1100 Regular Programs - Elementary / Secondary	8,094,413.00				
1200 Special Programs - Elementary / Secondary	6,548,371.00				
1300 Vocational Education	787,063.00				
1400 Other Instructional Programs - Elementary / Secondary	375.00				
Total Instruction	\$15,430,222.00				
2000 <u>Support Services</u>					
2100 Support Services - Students	1,061,818.00				
2200 Support Services - Instructional Staff	286,454.00				
2300 Support Services - Administration	1,328,425.00				
2400 Support Services - Pupil Health	335,479.00				
2500 Support Services - Business	480,108.00				
2600 Operation and Maintenance of Plant Services	1,540,548.00				
2700 Student Transportation Services	706,628.00				
2800 Support Services - Central	500,940.00				
2900 Other Support Services	39,550.00				
Total Support Services	\$6,279,950.00				
3000 <u>Operation of Non-Instructional Services</u>					
3200 Student Activities	352,545.00				
3300 Community Services	72,139.00				
Total Operation of Non-Instructional Services	\$424,684.00				
4000 <u>Facilities Acquisition, Construction and Improvement Services</u>					
4200 Existing Site Improvement Services	13,629.00				
Total Facilities Acquisition, Construction and Improvement Services	\$13,629.00				
5000 <u>Other Expenditures and Financing Uses</u>					
5100 Debt Service / Other Expenditures and Financing Uses	1,370,067.00				
Total Other Expenditures and Financing Uses	\$1,370,067.00				
TOTAL ACTUAL EXPENDITURES & OTHER FINANCING USES	\$23,518,552.00				

LEA : 122097203 Morrisville Borough SD

Printed 1/27/2021 10:01:00 AM

	Capital Reserve (690.1850)(31)	Capital Reserve (1431)(32)	Other Capital Projects Fund(39)	Debt Service(40)	Permanent(90)
1000 <u>Instruction</u>					
1100 Regular Programs - Elementary / Secondary					
1200 Special Programs - Elementary / Secondary					
1300 Vocational Education					
1400 Other Instructional Programs - Elementary / Secondary					
Total Instruction					
2000 <u>Support Services</u>					
2100 Support Services - Students					
2200 Support Services - Instructional Staff					
2300 Support Services - Administration					
2400 Support Services - Pupil Health					
2500 Support Services - Business					
2600 Operation and Maintenance of Plant Services			33,975.00		
2700 Student Transportation Services					
2800 Support Services - Central					
2900 Other Support Services					
Total Support Services			\$33,975.00		
3000 <u>Operation of Non-Instructional Services</u>					
3200 Student Activities					
3300 Community Services					
Total Operation of Non-Instructional Services					
4000 <u>Facilities Acquisition, Construction and Improvement Services</u>					
4200 Existing Site Improvement Services			3,415,156.00		
Total Facilities Acquisition, Construction and Improvement Services			\$3,415,156.00		
5000 <u>Other Expenditures and Financing Uses</u>					
5100 Debt Service / Other Expenditures and Financing Uses					
Total Other Expenditures and Financing Uses					
TOTAL ACTUAL EXPENDITURES & OTHER FINANCING USES			\$3,449,131.00		

LEA : 122097203 Morrisville Borough SD

Printed 1/27/2021 10:01:00 AM

	<u>Total</u>
1000 <u>Instruction</u>	
1100 Regular Programs - Elementary / Secondary	8,094,413.00
1200 Special Programs - Elementary / Secondary	6,548,371.00
1300 Vocational Education	787,063.00
1400 Other Instructional Programs - Elementary / Secondary	375.00
Total Instruction	\$15,430,222.00
2000 <u>Support Services</u>	
2100 Support Services - Students	1,061,818.00
2200 Support Services - Instructional Staff	286,454.00
2300 Support Services - Administration	1,328,425.00
2400 Support Services - Pupil Health	335,479.00
2500 Support Services - Business	480,108.00
2600 Operation and Maintenance of Plant Services	1,574,523.00
2700 Student Transportation Services	706,628.00
2800 Support Services - Central	500,940.00
2900 Other Support Services	39,550.00
Total Support Services	\$6,313,925.00
3000 <u>Operation of Non-Instructional Services</u>	
3200 Student Activities	352,545.00
3300 Community Services	72,139.00
Total Operation of Non-Instructional Services	\$424,684.00
4000 <u>Facilities Acquisition, Construction and Improvement Services</u>	
4200 Existing Site Improvement Services	3,428,785.00
Total Facilities Acquisition, Construction and Improvement Services	\$3,428,785.00
5000 <u>Other Expenditures and Financing Uses</u>	
5100 Debt Service / Other Expenditures and Financing Uses	1,370,067.00
Total Other Expenditures and Financing Uses	\$1,370,067.00
TOTAL ACTUAL EXPENDITURES & OTHER FINANCING USES	\$26,967,683.00

LEA : 122097203 Morrisville Borough SD

Printed 1/27/2021 10:01:09 AM

PSERS Salary Data (Salary Data should relate to the General Fund only)

Amount	Description	Amount
	Total Salary Base for salaries subject to PSERS withholding	8,326,614.00
	Total Federally Funded salaries subject to PSERS withholding	744,514.00

Title I Expenditure Data

Amount	Description	Amount
	Expenditures Funded with Current Title I Funds	232,773.00
	Expenditures Funded with Carry over Title I Funds	
Total Title I Expenditure Data		\$232,773.00

Benefits for Staff Relative to Collective Bargaining Agreements

	OBJECT	COVERED	NOT COVERED	TOTAL
10 General Fund				
	211 Medical Insurance			
	212 Dental Insurance			
	215 Eye Care Insurance			
	216 Prescription Insurance			
	271 Self-Insurance Medical Benefits	1,865,800.00	38,078.00	1,903,878.00
	272 Self-Insurance Dental Benefits			
	275 Self-Insurance Eye Care Benefits			
	276 Self-Insurance Prescription Benefits			
	FUND TOTAL	\$1,865,800.00	\$38,078.00	\$1,903,878.00
50 Enterprise Fund	No Self Insurance data to report			
	211 Medical Insurance			
	212 Dental Insurance			
	215 Eye Care Insurance			
	216 Prescription Insurance			
	271 Self-Insurance Medical Benefits			
	272 Self-Insurance Dental Benefits			
	275 Self-Insurance Eye Care Benefits			
	276 Self-Insurance Prescription Benefits			
	FUND TOTAL			
60 Internal Service Fund				
	211 Medical Insurance			
	212 Dental Insurance			
	215 Eye Care Insurance			
	216 Prescription Insurance			
	271 Self-Insurance Medical Benefits	965,099.00	19,696.00	984,795.00
	272 Self-Insurance Dental Benefits			
	275 Self-Insurance Eye Care Benefits			
	276 Self-Insurance Prescription Benefits			
	FUND TOTAL	\$965,099.00	\$19,696.00	\$984,795.00
Total of All Funds		\$2,830,899.00	\$57,774.00	\$2,888,673.00

LEA : 122097203 Morrisville Borough SD

Printed 1/27/2021 10:01:16 AM

Function	Special Education (Prior Year)	Nonspecial Education (Prior Year)	Total (Prior Year)	Special Education (Current Year)	Nonspecial Education (Current Year)	Total (Current Year)
2120 Guidance Services	120,070.00	396,780.00	516,850.00	137,297.00	393,060.00	530,357.00
2140 Psychological Services	40,467.00	133,725.00	174,192.00	55,054.00	157,609.00	212,663.00
2150 Speech Pathology and Audiology Services						
2160 Social Work Services						
2260 Instruction and Curriculum Development Services	33,490.00	110,668.00	144,158.00	40,264.00	115,268.00	155,532.00
2350 Legal and Accounting Services	32,108.00	106,102.00	138,210.00	29,257.00	83,758.00	113,015.00
2420 Medical Services	27,572.00	91,112.00	118,684.00	32,477.00	92,977.00	125,454.00
2440 Nursing Services	43,906.00	145,090.00	188,996.00	53,853.00	154,172.00	208,025.00
2700 Student Transportation Services	140,432.00	464,066.00	604,498.00	182,930.00	523,698.00	706,628.00
Total	\$438,045.00	\$1,447,543.00	\$1,885,588.00	\$531,132.00	\$1,520,542.00	\$2,051,674.00

LEA : 122097203 Morrisville Borough SD

Printed 1/27/2021 10:01:22 AM

(PRINCIPAL AMOUNTS ONLY)

GOVERNMENTAL FUNDS/ ACTIVITIES

	Short-Term Borrowing	General Obligation Bonds/Notes	Authority Building Obligations	Other Long-Term Debt	Other Post- Employment Benefits (OPEB)	Compensated Absences	Net Pension Liability	Total
1. Debt at Beginning of Fiscal Year		10,958,000.00		68,200.00	1,629,937.00	245,174.00	27,794,875.00	40,696,186.00
2. Additional Debt Incurred During Year		800,000.00		33,975.00	334,261.00	29,372.00		1,197,608.00
3. Retirements and Repayments		1,044,000.00		42,578.00	38,367.00		6,006.00	1,130,951.00
4. Debt at End of Fiscal Year		10,714,000.00		59,597.00	1,925,831.00	274,546.00	27,788,869.00	40,762,843.00
5. Accreted Interest at End Of Fiscal Year								
6. Total Debt and Accreted Interest		10,714,000.00		59,597.00	1,925,831.00	274,546.00	27,788,869.00	40,762,843.00
7. Current Portion P&I - Due within 1 year		652,903.00		21,914.00				674,817.00
8. Interest Paid during current fiscal year		317,036.00		580.00				317,616.00

(PRINCIPAL AMOUNTS ONLY)

PROPRIETARY FUNDS

- 1. Debt at Beginning of Fiscal Year
- 2. Additional Debt Incurred During Year
- 3. Retirements and Repayments
- 4. Debt at End of Fiscal Year
- 5. Accreted Interest at End Of Fiscal Year
- 6. Total Debt and Accreted Interest
- 7. Current Portion P&I - Due within 1 year
- 8. Interest Paid during current fiscal year

LEA : 122097203 Morrisville Borough SD

Printed 1/27/2021 10:01:22 AM

Total Principal and Interest Payments Made by Your School - All Funds

Function	Fund		Principal (910)	Principal (920)	Interest (830)	Total (Principal +Interest)	Misc Other Uses (990)
5110	10	General Fund	314,000.00		318,767.00	632,767.00	
5110	20	Special Revenue Funds					
5110	30	Capital Projects Funds					
5110	40	Debt Service Fund					
5110	90	Permanent Fund					
5120	10	General Fund	737,300.00			737,300.00	
5120	20	Special Revenue Funds					
5120	30	Capital Projects Funds					
5120	40	Debt Service Fund					
Total Debt Payments - Governmental Funds			\$1,051,300.00		\$318,767.00	\$1,370,067.00	
Function	Fund		Principal (910)	Principal (920)	Interest (830)	Total (Principal +Interest)	
5110	50	Enterprise Fund					
5110	60	Internal Service Fund					
5120	50	Enterprise Fund					
5120	60	Internal Service Fund					
Total Debt Payments - Proprietary Funds							

LEA : 122097203 Morrisville Borough SD

Printed 1/27/2021 10:01:22 AM

Debt Details
Governmental Funds/ Activities

Debt Category	Debt Issue Date (MM/YYYY)	Principal Amounts Only				Current Portion Due Within One Year (Principal and Interest)	Interest Paid During Fiscal Year
		Debt at Beginning of Fiscal Year	Additions	Reductions / Repayments	Debt at End of Fiscal Year		
General Obligation Bonds/Notes – CIB	09/2019		800,000.00		800,000.00	28,375.00	18,337.00
General Obligation Bonds/Notes – CIB	12/2017	7,120,000.00		5,000.00	7,115,000.00	219,638.00	214,738.00
General Obligation Bonds/Notes – CIB	11/2014	3,400,000.00		900,000.00	2,500,000.00	253,094.00	70,331.00
General Obligation Bonds/Notes – CIB	10/2001	438,000.00		139,000.00	299,000.00	151,796.00	13,630.00
Extended Term Financing Agreements			33,975.00	3,178.00	30,797.00	7,514.00	579.00
Other Long Term Debt/Liabilities		68,200.00		39,400.00	28,800.00	14,400.00	1.00
Compensated Absences		245,174.00	29,372.00		274,546.00		
Other Post-Employment Benefits (OPEB)		1,629,937.00	334,261.00	38,367.00	1,925,831.00		
Net Pension Liability		27,794,875.00		6,006.00	27,788,869.00		
Totals for Debt Entered:		\$40,696,186.00	\$1,197,608.00	\$1,130,951.00	\$40,762,843.00	\$674,817.00	\$317,616.00

LEA : 122097203 Morrisville Borough SD

Printed 1/27/2021 10:01:25 AM

General Fund (10)

Section 1: Tuition/Purchased Services as Reported within Expenditure Detail	Amount
Tuition Reported in General Fund Expenditures 1000-560	2,342,540.00
Purchased Services in General Fund Expenditures 1000-594 and 1000-597	
Section 1 Total	\$2,342,540.00

Section 2: Tuition Paid to Institution Types During Fiscal Year	Tuition Paid For Nonspecial Education	Tuition Paid For Special Education	Total
1 1306 Institutions			
2 Institutionalized Children's Programs			
3 Juveniles Incarcerated in Adult Facilities			
4 Residential Treatment Facilities			
5 Other Local Education Agencies		410,080.00	410,080.00
6 Brick and Mortar Charter Schools	269,766.00	197,992.00	467,758.00
7 Cyber Charter Schools	535,849.00	39,788.00	575,637.00
8 Career and Technology Centers	726,978.00		726,978.00
9 Approved Private Schools		77,835.00	77,835.00
10 PA Chartered Schools for the Deaf and Blind		83,875.00	83,875.00
11 Private Residential Rehabilitative Institutions			
12 Juvenile Detention Centers			
13 Special Program Jointures			
14 Other Tuition Not Included Elsewhere In This Section	377.00		377.00
Section 2 Total	\$1,532,970.00	\$809,570.00	\$2,342,540.00

LEA : 122097203 Morrisville Borough SD

Printed 1/27/2021 10:01:32 AM

Food Service / Cafeteria Operations Fund (51)

3000 Operation of Non-Instructional Services	<u>Total</u>
500 <u>Other Purchased Services</u>	
570 Food Service Management	202,344.00
Total Other Purchased Services	\$202,344.00
600 <u>Supplies</u>	
610 General Supplies	1,646.00
630 Food	154,436.00
Total Supplies	\$156,082.00
700 <u>Property</u>	
740 Depreciation	1,533.00
Total Property	\$1,533.00
800 <u>Other Objects</u>	
810 Dues and Fees	315.00
Total Other Objects	\$315.00
Total 3000 Operation of Non-Instructional Services	\$360,274.00

LEA : 122097203 Morrisville Borough SD

Printed 1/27/2021 10:01:32 AM

Food Service / Cafeteria Operations Fund (51)

3100 Food Services	<u>Elementary</u>	<u>Secondary</u>	<u>Federal</u>	<u>Total</u>
500 <u>Other Purchased Services</u>				
570 Food Service Management				202,344.00
Total Other Purchased Services				\$202,344.00
600 <u>Supplies</u>				
610 General Supplies				1,646.00
630 Food				154,436.00
Total Supplies				\$156,082.00
700 <u>Property</u>				
740 Depreciation				1,533.00
Total Property				\$1,533.00
800 <u>Other Objects</u>				
810 Dues and Fees				315.00
Total Other Objects				\$315.00
Total 3100 Food Services				\$360,274.00

LEA : 122097203 Morrisville Borough SD

Printed 1/27/2021 10:01:29 AM

Internal Service Fund (60)

2000 Support Services

Total

200 <u>Personnel Services – Employee Benefits</u>	
270 Group Insurance – Self-Insurance	984,795.00
Total Personnel Services – Employee Benefits	\$984,795.00
Total 2000 Support Services	\$984,795.00

LEA : 122097203 Morrisville Borough SD

Printed 1/27/2021 10:01:29 AM

Internal Service Fund (60)

2300 Support Services – Administration

Elementary

Secondary

Federal

Total

200 Personnel Services – Employee Benefits

270 Group Insurance – Self-Insurance

984,795.00

Total Personnel Services – Employee Benefits

\$984,795.00

Total 2300 Support Services – Administration

\$984,795.00

LEA : 122097203 Morrisville Borough SD

Printed 1/27/2021 10:01:29 AM

Internal Service Fund (60)

2390 Other Administration Services

	<u>Elementary</u>	<u>Secondary</u>	<u>Federal</u>	<u>Total</u>
200 <u>Personnel Services – Employee Benefits</u>				
270 Group Insurance – Self-Insurance				984,795.00
Total Personnel Services – Employee Benefits				\$984,795.00
Total 2390 Other Administration Services				\$984,795.00

	<u>Food Service(51)</u>	<u>Child Care Operations(52)</u>	<u>Other Enterprise(58)</u>	<u>Internal Service(60)</u>	<u>Total</u>
2000 <u>Support Services</u>					
2300 Support Services - Administration				984,795.00	984,795.00
Total Support Services				\$984,795.00	\$984,795.00
3000 <u>Operation of Non-Instructional Services</u>					
3100 Food Services	360,274.00				360,274.00
Total Operation of Non-Instructional Services	\$360,274.00				\$360,274.00
TOTAL ACTUAL EXPENDITURES & OTHER FINANCING USES	\$360,274.00			\$984,795.00	\$1,345,069.00

LEA : 122097203 Morrisville Borough SD

Printed 1/27/2021 10:01:58 AM

Fund	School	School Number	Local Personnel	Local Nonpersonnel	State Personnel	State Nonpersonnel	Federal Personnel	Federal Nonpersonnel	Total	Explanation
10										
	Grandview El Sch	8112	3,054,560.00	474,490.00	1,557,628.00	241,959.00	280,486.00	43,570.00	5,652,693.00	
	Morrisville HS	8381	3,050,222.00	374,214.00	1,555,416.00	190,825.00	280,087.00	34,362.00	5,485,126.00	
	Morrisville Intermediate Sch	8380	2,874,902.00	848,338.00	1,466,014.00	432,598.00	263,989.00	77,899.00	5,963,740.00	
Total			8,979,684.00	1,697,042.00	4,579,058.00	865,382.00	824,562.00	155,831.00	17,101,559.00	